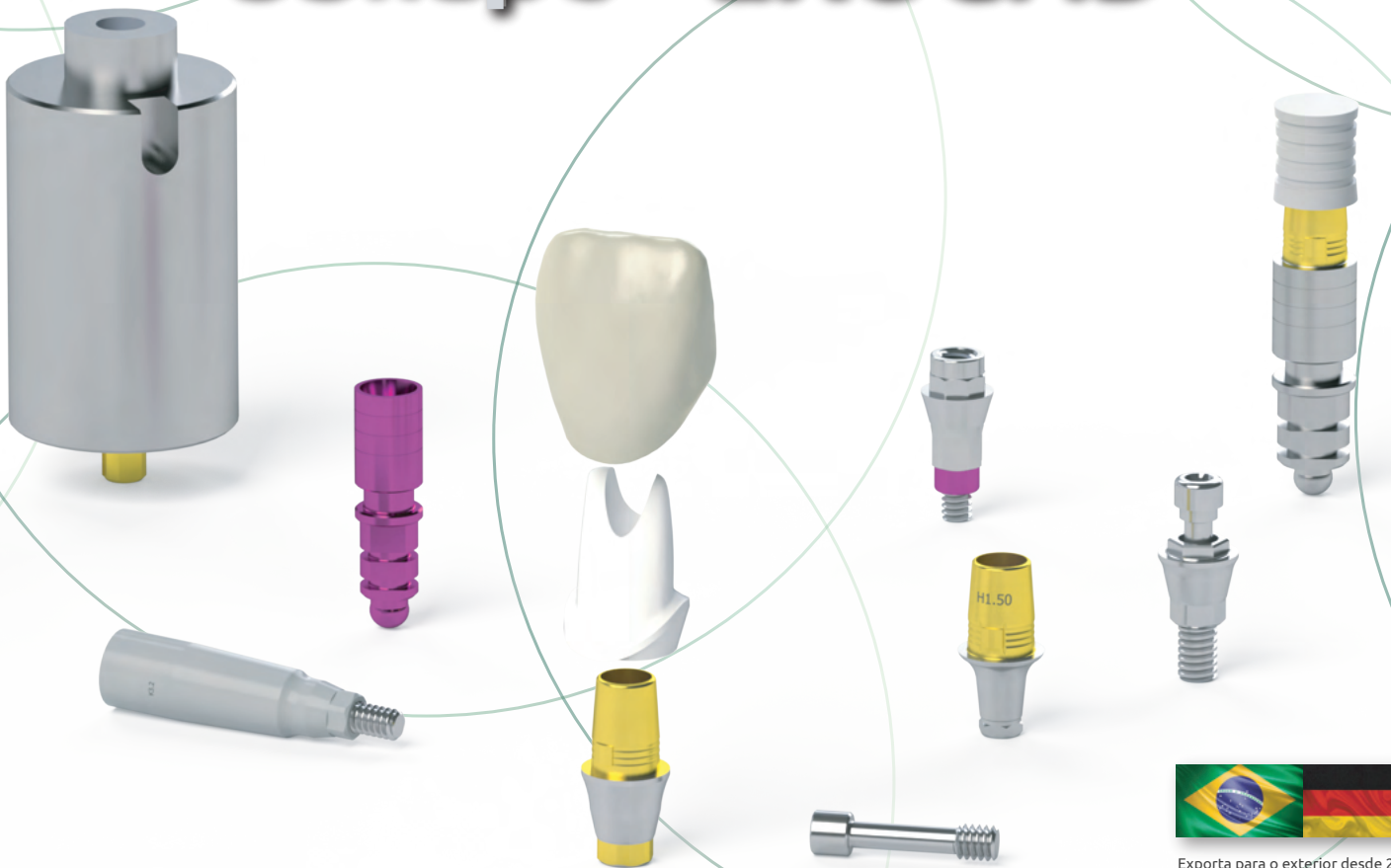




Especialista em Componentes Digitais

3Shape® EXOCAD®



Exporta para o exterior desde 2011.

Aperfeiçoando tecnologias

A EFF Dental e a tecnologia digital vieram garantir processos de alta qualidade com menos demanda de tempo...

...tempo esse, que você, profissional, terá para curtir a vida!




Usuário CEREC[®] confira, e descubra como podemos

Facilitar o seu dia a dia!



Escaneie o QR CODE e baixe os catálogos de Componentes Digitais EFF Dental

Aplicação	Tipo da Conexão		Página
Nobel Biocare® 3.0 NP RP WP	Cone Morse	K3.1 K3.2 K3.3 K3.5	4
Nobel Biocare® NP RP WP	Conexão Interna	K2.1 K2.2 K2.3	5
Nobel Biocare® NP RP WP	Conexão Externa	K1.1 K1.2 K1.3	6
Straumann® SC NC RC	Cone Morse	J3.5 J3.3 J3.4	7
Straumann® RN WN	Cone Morse	J3.1 J3.2	8
Straumann® RB WB	Cone Morse	J3.6 J3.7	9
Straumann® NT RT WT	Cone Morse	J3.9 J3.10 J3.11	10
Straumann® Pilar SynOcta® SRA® MultiBase®		SynO RN WN MBase/SRA	11
Neodent®	Cone Morse	A3.1 A3.2	12
Neodent®	Conexão Interna	A2.1	13
Neodent®	Conexão Externa	A1.1 A1.3 A1.4	14
Neodent® Pilar EGM Micro Pilar EGM Pilar GT		PGM MPGM MPGT	15
MIS® C1 V3 Narrow C1 V3 Standard	Cone Morse	T3.1 T3.2 T3.3	16
Plenum® SL RE	Cone Morse	Y3.1 Y3.2	17
Bionnovation® BioMorse®	Cone Morse	U3.1	18
Anthogyr®	Cone Morse	M3.1	19
SIN®	Cone Morse	C3.1 A3.1	20
SIN®	Conexão Interna	B2.1 B2.2 B2.3	21
SIN®	Conexão Externa	B1.1 B1.2 B1.3	22
Conexão®	Conexão Interna	C2.1 C2.2 C2.3	23
SignoVinces® Duocon® Infra® Duocon®	Cone Morse	Q3.1 Q3.2	24
Astra Tech® EV	Cone Morse	Q3.3 Q3.4 Q3.5 Q3.6	25
Frialit®	Conexão Interna	O2.2 O2.3 O2.4	26
Dentoflex®	Conexão Interna	G2.1 G2.2 G2.3	27
Biomet 3i™ Certain	Conexão Interna	L2.1 L2.2 L2.3	28
Biomet 3i™ Certain	Conexão Externa	L1.1 L1.2 L1.3	29
Implacil® Due Cone® Maestro®	Cone Morse	D3.1	30
Implacil®	Conexão Interna	D2.1 D2.2 D2.3	31
Implacil®	Conexão Externa	D1.1	32
Serson Baumer®	Conexão Interna	X2.1	33
TitaniumFix®	Conexão Interna	E2.1	34
TitaniumFix®	Conexão Externa	E1.1	35
Camlog®	Conexão Interna	P2.1 P2.2 P2.3	36
Camlog®	Conexão Interna	P2.4 P2.5	37
Mini Pilar Regular Larga Esthetione		M.P. M.P.L.1 EONE	38
Mini Pilar Larga NEO Estheticone DSP® Flexcone®		M.P.L.2 EST F1.1/F1.2	39

Componentes Sistema Nobel Biocare® Cone Morse

SMP K3.1|K3.2|K3.3|K3.4
Sistema Nobel Biocare

3Shape® EXOCAD®

K3.1
Ø3.0



Scan Intraoral
EFF 9205 . 15A . P . CJ



K3.2
NP|Ø3.5



Scan Intraoral
EFF 9205 . 06A . P . CJ



K3.3
RP|Ø4.3



Scan Intraoral
EFF 9205 . 07A . P . CJ



K3.5
WP|Ø5.5



Scan Intraoral
EFF 9205 . 30A . P . CJ



Análogo Híbrido
EFF 305 . 15



Análogo Híbrido
EFF 305 . 06



Análogo Híbrido
EFF 305 . 07



Análogo Híbrido
EFF 305 . 30



Link para CAD/CAM
Small / Anti Rotacional
EFF 6805 . 15A . 1 . S cinta 1.5mm
EFF 6805 . 15A . 2 . S cinta 2.5mm
EFF 6805 . 15A . 3 . S cinta 3.5mm



Parafuso
Torque 10Ncm
EFF 2101 . 06A
EFF 2101 . 06C



Link para CAD/CAM
Large / Anti Rotacional
EFF 6805 . 06A . 4 . cinta 0.5mm
EFF 6805 . 06A . 1 . cinta 1.5mm
EFF 6805 . 06A . 2 . cinta 2.5mm
EFF 6805 . 06A . 3 . cinta 3.5mm
Large / Rotacional
EFF 6805 . 06B . 4 . cinta 0.5mm
Small / Anti Rotacional
EFF 6805 . 06A . 1S . cinta 1.5mm
EFF 6805 . 06A . 2S . cinta 2.5mm
EFF 6805 . 06A . 3S . cinta 3.5mm



Parafuso
Torque 20Ncm
EFF 2102 . 02A
EFF 2102 . 02C
EFF 2102 . 02F



Link para CAD/CAM
Large / Anti Rotacional
EFF 6805 . 07A . 4 . cinta 0.5mm
EFF 6805 . 07A . 1 . cinta 1.5mm
EFF 6805 . 07A . 2 . cinta 2.5mm
EFF 6805 . 07A . 3 . cinta 3.5mm
Large / Rotacional
EFF 6805 . 07B . 4 . cinta 0.5mm



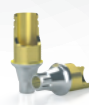
Parafuso
Torque 32Ncm
EFF 2104 . 15A
EFF 2104 . 15C
EFF 2104 . 15F



Link para CAD/CAM
Large / Anti Rotacional
EFF 6805 . 30A . 1 . cinta 1.5mm



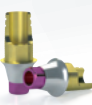
Parafuso
Torque 32Ncm
EFF 2104 . 15A
EFF 2104 . 15C
EFF 2104 . 15F



Link Dinâmico
Small / Anti Rotacional
EFF 6805 . 15A . 1 . D cinta 1.5mm
EFF 6805 . 15A . 2 . D cinta 2.5mm
EFF 6805 . 15A . 3 . D cinta 3.5mm



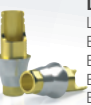
Parafuso
Torque 10Ncm
EFF 2101 . 06A
EFF 2101 . 06C



Link Dinâmico
Large / Anti Rotacional
EFF 6805 . 06A . 4 . D cinta 0.5mm
EFF 6805 . 06A . 1 . D cinta 1.5mm
EFF 6805 . 06A . 2 . D cinta 2.5mm
EFF 6805 . 06A . 3 . D cinta 3.5mm



Parafuso
Torque 20Ncm
EFF 2102 . 02A
EFF 2102 . 02C
EFF 2102 . 02F



Link Dinâmico
Large / Anti Rotacional
EFF 6805 . 07A . 4 . D cinta 0.5mm
EFF 6805 . 07A . 1 . D cinta 1.5mm
EFF 6805 . 07A . 2 . D cinta 2.5mm
EFF 6805 . 07A . 3 . D cinta 3.5mm



Parafuso
Torque 32Ncm
EFF 2104 . 15A
EFF 2104 . 15C
EFF 2104 . 15F



Link Dinâmico
Large / Anti Rotacional
EFF 6805 . 30A . 1 . D cinta 1.5mm



Parafuso
Torque 32Ncm
EFF 2104 . 15A
EFF 2104 . 15C
EFF 2104 . 15F



AnálogoLink
Small
EFF 330 . 01 . 1S



AnálogoLink
Large
EFF EFF 330 . 01 . 1L
Small
EFF EFF 330 . 01 . 1S



AnálogoLink
Large
EFF 330 . 01 . 1L



AnálogoLink
Large
EFF 330 . 04 . 1L



Interface para Zircônia
EFF 6905 . 15A



Parafuso Unigrip para Zircônia
Torque 10Ncm
EFF 2101 . 07C



Interface para Zircônia
EFF 6905 . 06A



Parafuso Unigrip para Zircônia
Torque 20Ncm
EFF 2102 . 08C



Interface para Zircônia
EFF 6905 . 07A



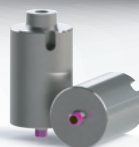
Parafuso Unigrip para Zircônia
Torque 32Ncm
EFF 2104 . 13C



Abut. Rollings*
EFF 1505 . 15A . T
EFF 1505 . 15A . C



Parafuso
Torque 10Ncm
EFF 2101 . 06A
EFF 2101 . 06C



Abut. Rollings*
EFF 1505 . 06A . T
EFF 1505 . 06A . C



Parafuso
Torque 20Ncm
EFF 2102 . 02A
EFF 2102 . 02C
EFF 2102 . 02F



Abut. Rollings*
EFF 1505 . 07A . T
EFF 1505 . 07A . C



Parafuso
Torque 32Ncm
EFF 2104 . 15A
EFF 2104 . 15C
EFF 2104 . 15F

Componentes Sistema Nobel Biocare® Conexão Interna

 **K2.1|K2.2|K2.3**

3Shape® EXOCAD®

K2.1
NP|Ø3.5



Scan Intraoral
EFF 9202 . 01A . P . CJ



K2.2
RP|Ø4.3



Scan Intraoral
EFF 9202 . 02A . P . CJ



K2.3
WP|Ø5.0



Scan Intraoral
EFF 9202 . 03A . P . CJ



Análogo Híbrido
EFF 302 . 01



Análogo Híbrido
EFF 302 . 02



Análogo Híbrido
EFF 302 . 03



Link para CAD/CAM
Large / Anti Rotacional
EFF 6802 . 01A . 1 cinta 1.0mm
EFF 6802 . 01A . 2 cinta 2.0mm
EFF 6802 . 01A . 3 cinta 3.0mm



Parafuso
Torque 20Ncm
EFF 2103 . 03A
EFF 2103 . 03C
EFF 2103 . 03F



Link para CAD/CAM
Large / Anti Rotacional
EFF 6802 . 02A . 1 cinta 1.0mm
EFF 6802 . 02A . 2 cinta 2.0mm
EFF 6802 . 02A . 3 cinta 3.0mm



Parafuso
Torque 32Ncm
EFF 2104 . 02A
EFF 2104 . 02C
EFF 2104 . 02F



Link para CAD/CAM
Large / Anti Rotacional
EFF 6802 . 03A . 1 cinta 1.0mm
EFF 6802 . 03A . 2 cinta 2.0mm
EFF 6802 . 03A . 3 cinta 3.0mm



Parafuso
Torque 32Ncm
EFF 2104 . 02A
EFF 2104 . 02C
EFF 2104 . 02F



AnálogoLink
Large
EFF 330 . 01 . 1L



AnálogoLink
Large
EFF 330 . 03 . 1L



Interface para Zircônia
EFF 6902 . 01A



Parafuso Unigrip para Zircônia
Torque 20Ncm
EFF 2103 . 04C



Interface para Zircônia
EFF 6902 . 02A



Parafuso Unigrip para Zircônia
Torque 32Ncm
EFF 2104 . 04C



Interface para Zircônia
EFF 6902 . 03A



Parafuso Unigrip para Zircônia
Torque 32Ncm
EFF 2104 . 04C



Abut. Rollings*
EFF 1502 . 01A . T
EFF 1502 . 01A . C



Parafuso
Torque 20Ncm
EFF 2103 . 03A
EFF 2103 . 03C
EFF 2103 . 03F



Abut. Rollings*
EFF 1502 . 02A . T
EFF 1502 . 02A . C



Parafuso
Torque 32Ncm
EFF 2104 . 02A
EFF 2104 . 02C
EFF 2104 . 02F



Abut. Rollings*
EFF 1502 . 03A . T
EFF 1502 . 03A . C



Parafuso
Torque 32Ncm
EFF 2104 . 02A
EFF 2104 . 02C
EFF 2104 . 02F

Componentes Sistema Nobel Biocare® Conexão Externa



K1.1|K1.2|K1.3

3Shape® EXOCAD®

K1.1
NP|Ø3.5



Scan Intraoral
EFF 9201 . 01A . P . CJ



K1.2
RP|Ø4.1



Scan Intraoral
EFF 9201 . 04A . P . CJ



K1.3
WP|Ø5.1



Scan Intraoral
EFF 9201 . 06A . P . CJ



Análogo Híbrido
EFF 301 . 01



Análogo Híbrido
EFF 301 . 04



Análogo Híbrido
EFF 301 . 06



Link para CAD/CAM
Large /Anti Rotacional
EFF 6801 . 01A . 1 cinta 0.6mm
Large / Rotacional
EFF 6801 . 01B . 1 cinta 0.6mm



Parafuso
Torque 20Ncm
EFF 2102 . 02A
EFF 2102 . 02C



Link para CAD/CAM
Large / Anti Rotacional
EFF 6801 . 04A . 1 cinta 0.6mm
EFF 6801 . 04A . 2 cinta 2.0mm
EFF 6801 . 04A . 3 cinta 3.0mm
EFF 6801 . 04A . 4 cinta 4.0mm
Large / Rotacional
EFF 6801 . 04B . 1 cinta 1.0mm



Parafuso
Torque 32Ncm
EFF 2104 . 01A
EFF 2104 . 01C
EFF 2104 . 01F



Link para CAD/CAM
Large /Anti Rotacional
EFF 6801 . 06A . 1 cinta 0.6mm
Large /Rotacional
EFF 6801 . 06B . 1 cinta 0.6mm



Parafuso
Torque 32Ncm
EFF 2105 . 01A
EFF 2105 . 01C



Link Dinâmico
Large / Anti Rotacional
EFF 6801 . 04A . 1 . D cinta 0.6mm
EFF 6801 . 04A . 2 . D cinta 2.0mm
EFF 6801 . 04A . 3 . D cinta 3.0mm
EFF 6801 . 04A . 4 . D cinta 4.0mm
Large / Rotacional
EFF 6801 . 04B . 1 . D cinta 1.0mm



Parafuso
Torque 32Ncm
EFF 2104 . 01A
EFF 2104 . 01C
EFF 2104 . 01F



Link para CAD/CAM

Anti Rotacional
EFF 6801 . 04A
Rotacional
EFF 6801 . 04B



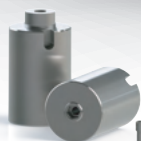
Parafuso Hexagonal
Torque 32Ncm
EFF 2104 . 01A



Parafuso 360°
Torque 32Ncm
EFF 2104 . 01F



AnálogoLink
Large
EFF 330 . 03 . 1L



Abut. Rollings*
EFF 1501 . 01A . T
EFF 1501 . 01A . C



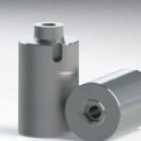
Parafuso
Torque 20Ncm
EFF 2102 . 02A
EFF 2102 . 02C



Abut. Rollings*
EFF 1501 . 04A . T
EFF 1501 . 04A . C



Parafuso
Torque 32Ncm
EFF 2104 . 01A
EFF 2104 . 01C
EFF 2104 . 01F



Abut. Rollings*
EFF 1501 . 06A . T
EFF 1501 . 06A . C



Parafuso
Torque 32Ncm
EFF 2105 . 01A
EFF 2105 . 01C

Componentes Sistema Straumann® Bone Level

S **M** **P** J3.5|J3.3|J3.4
Sistema-HK-Instalador

J3.5
SCØ2.9



Scan Intraoral
EFF 9205 . 28A . P . CJ



J3.3
NCØ3.3



Scan Intraoral
EFF 9205 . 03A . P . CJ



J3.4
RCØ4.1



Scan Intraoral
EFF 9205 . 04A . P . CJ



Análogo Híbrido
EFF 305 . 28



Análogo Híbrido
EFF 305 . 03



Análogo Híbrido
EFF 305 . 04



Link para CAD/CAM
Small / Anti Rotacional
EFF 6805 . 28A . 1S cinta 1.0mm
EFF 6805 . 28A . 2S cinta 2.0mm
EFF 6805 . 28A . 3S cinta 3.0mm



Link para CAD/CAM
Large / Anti Rotacional
EFF 6805 . 03A . 1 cinta 0.7mm
EFF 6805 . 03A . 4 cinta 1.5mm
EFF 6805 . 03A . 2 cinta 2.5mm
EFF 6805 . 03A . 3 cinta 3.5mm
Small / Anti Rotacional
EFF 6805 . 03A . 1S cinta 0.7mm
EFF 6805 . 03A . 4S cinta 1.5mm
EFF 6805 . 03A . 2S cinta 2.5mm
EFF 6805 . 03A . 3S cinta 3.5mm



Link para CAD/CAM
Large / Anti Rotacional
EFF 6805 . 04A . 1 cinta 0.7mm
EFF 6805 . 04A . 4 cinta 1.5mm
EFF 6805 . 04A . 2 cinta 2.5mm
EFF 6805 . 04A . 3 cinta 3.5mm
Small / Anti Rotacional
EFF 6805 . 04A . 1S cinta 0.7mm
EFF 6805 . 04A . 4S cinta 1.5mm
EFF 6805 . 04A . 2S cinta 2.5mm
EFF 6805 . 04A . 3S cinta 3.5mm



Link para CAD/CAM PerfectBase
Large / Anti Rotacional
EFF 6805 . 03A . P . 1 cinta 1.0mm
EFF 6805 . 03A . P . 2 cinta 2.0mm
EFF 6805 . 03A . P . 3 cinta 3.0mm



Link para CAD/CAM PerfectBase
Large / Anti Rotacional
EFF 6805 . 04A . P . 1 cinta 1.0mm
EFF 6805 . 04A . P . 2 cinta 2.0mm
EFF 6805 . 04A . P . 3 cinta 3.0mm



AnálogoLink
Small
EFF 330 . 01 . 1S



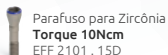
AnálogoLink
Large
EFF 330 . 01 . 1L
Small
EFF 330 . 01 . 1S



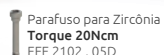
AnálogoLink
Large
EFF 330 . 02 . 1L
Small
EFF 330 . 01 . 1S



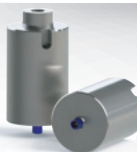
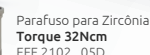
Interface para Zircônia
EFF 6905 . 28A



Interface para Zircônia
EFF 6905 . 03A



Interface para Zircônia
EFF 6905 . 04A



Abut. Rollings*
EFF 1505 . 28A . T
EFF 1505 . 28A . C



Abut. Rollings*
EFF 1505 . 03A . T
EFF 1505 . 03A . C



Abut. Rollings*
EFF 1505 . 04A . T
EFF 1505 . 04A . C



Componentes Sistema Straumann® Tissue Level



J3.1|J3.2

J3.1
RN|Ø4.8



Scan Intraoral
EFF 9205 . 01A . P . CJ



Torque 15Ncm

J3.2
WN|Ø6.5



Scan Intraoral (Switching)
EFF 9205 . 01A . P . CJ



Torque 15Ncm



Análogo Híbrido
EFF 305 . 01



Análogo Híbrido
EFF 305 . 02



Link para CAD/CAM
Large /Anti Rotacional
EFF 6805 . 01A . 1 cinta 1.5mm



Parafuso
Torque 32Ncm
EFF 2104 . 17D



Link para CAD/CAM
Large /Anti Rotacional
EFF 6805 . 02A . 1 cinta 1.5mm



Parafuso
Torque 32Ncm
EFF 2104 . 17D



**Link para CAD/CAM
PerfectBase**
Large /Anti Rotacional
EFF 6805 . 01A . P cinta 1.5mm



Parafuso
Torque 32Ncm
EFF 2104 . 19D



**Link para CAD/CAM
PerfectBase**
Large /Anti Rotacional
EFF 6805 . 02A . P cinta 1.5mm



Parafuso
Torque 32Ncm
EFF 2104 . 19D



AnálogoLink
Large
EFF 330 . 03 . 1L



AnálogoLink
Large
EFF 330 . 05 . 1L



Abut. Rollings*
EFF 1505 . 01A . T
EFF 1505 . 01A . C



Parafuso
Torque 32Ncm
EFF 2104 . 17D



Abut. Rollings*
EFF 1505 . 02A . T
EFF 1505 . 02A . C



Parafuso
Torque 32Ncm
EFF 2104 . 17D

3Shape® EXOCAD®

Componentes Sistema Straumann® BLX

 J3.6|J3.7

J3.6
RB
Ø3.5/3.75
/4.0/4.5



Scan Intraoral
EFF 9205 . 31A . P . CJ



J3.7
WB
Ø3.5/3.75
/4.0/4.5
/4.5/4.8



Scan Intraoral
EFF 9205 . 31A . P . CJ



Análogo Híbrido
EFF 305 . 31



Análogo Híbrido
EFF 305 . 32



Link para CAD/CAM
Large / Anti Rotacional
Perfil Ø4.4/h4.7mm
EFF 6805 . 31 . 3A . 1 cinta 0.75mm
EFF 6805 . 31 . 3B . 1 cinta 1.5mm
EFF 6805 . 31 . 3C . 1 cinta 2.5mm
EFF 6805 . 31 . 3D . 1 cinta 3.5mm



Small / Anti Rotacional
Perfil Ø3.8/h4.7mm
EFF 6805 . 31 . 3A . 1 . S cinta 0.75mm
EFF 6805 . 31 . 3B . 1 . S cinta 1.5mm



Link para CAD/CAM
Large / Anti Rotacional
Perfil Ø5.5/h4.7mm
EFF 6805 . 33 . 2A . 1 cinta 0.75mm
EFF 6805 . 33 . 2B . 1 cinta 1.5mm



Link para CAD/CAM para RB/WB Perfect Base
Large / Anti Rotacional
Perfil Ø3.8/h5.5mm
EFF 6805 . 31 . 1A . 3 cinta 1.5mm
EFF 6805 . 31 . 1B . 3 cinta 2.5mm
EFF 6805 . 31 . 1C . 3 cinta 3.5mm
Small / Anti Rotacional
Perfil Ø4.5/h5.5mm
EFF 6805 . 31 . 2A . 3 cinta 1.5mm
EFF 6805 . 31 . 2B . 3 cinta 2.5mm
EFF 6805 . 31 . 2C . 3 cinta 3.5mm



Link para CAD/CAM para RB/WB Perfect Base
Large / Anti Rotacional
Perfil Ø5.5/h5.5mm
EFF 6805 . 33 . 1A . 3 cinta 0.75mm
EFF 6805 . 33 . 1B . 3 cinta 1.5mm



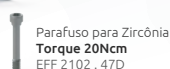
AnálogoLink
Large
EFF 330 . 01 . 1L
Small
EFF 330 . 01 . 1S



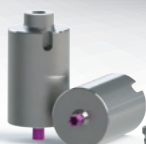
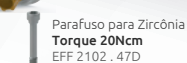
AnálogoLink
Large
EFF 330 . 04 . 1L



Interface para Zircônia
EFF 6905 . 31A



Interface para Zircônia
EFF 6905 . 32A



Abut. Rollings*
EFF 1505 . 31A . T
EFF 1505 . 31A . C



Abut. Rollings*
EFF 1505 . 32A . T
EFF 1505 . 32A . C



Componentes Sistema Straumann® TLX



J3.9|J3.10|J3.11

J3.9
NT|Ø3.5



Scan Intraoral
EFF 9205 . 31A . P . CJ



J3.10
RT|Ø4.8



Scan Intraoral
EFF 9205 . 31A . P . CJ



J3.11
WT|Ø6.5



Scan Intraoral
EFF 9205 . 31A . P . CJ



Análogo Híbrido
EFF 305 . 47



Análogo Híbrido
EFF 305 . 48



Análogo Híbrido
EFF 305 . 49



Link para CAD/CAM
Small /Anti Rotacional
EFF 6805 . 47A . 1S cinta 0.4mm



Link para CAD/CAM
Large /Anti Rotacional
EFF 6805 . 48A . 1 cinta 0.65mm



Link para CAD/CAM
Large /Anti Rotacional
EFF 6805 . 49A . 1 cinta 0.85mm

Parafuso
Torque 20Ncm
EFF 2102 . 82D

Parafuso
Torque 20Ncm
EFF 2102 . 82D

Parafuso
Torque 20Ncm
EFF 2102 . 82D



AnálogoLink
Small
EFF 330 . 01 . 1S



AnálogoLink
Large
EFF 330 . 02 . 1L



AnálogoLink
Large
EFF 330 . 05 . 1L

3Shape® EXOCAD®

Componentes Sistema Straumann® Pilares

 SynO RN/WN|MBase/SRA

3Shape® EXOCAD®

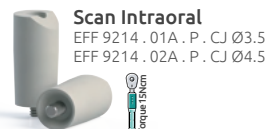
SynO
RN



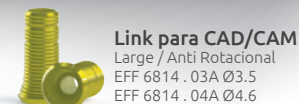
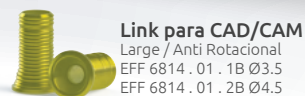
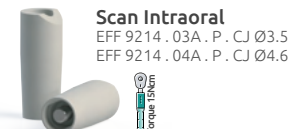
SynO
WN



MBase
Ø3.5/4.5



SRA
Ø3.5/4.6



Parafuso
Torque 32Ncm
EFF 2104 . 10D

Parafuso
Torque 32Ncm
EFF 2104 . 10D

Parafuso
Torque 10Ncm
EFF 2101 . 08D

Parafuso
Torque 10Ncm
EFF 2101 . 11D

Componentes Sistema Neodent® Cone Morse

A3.1|A3.2

Sistema Neodent

**A3.1
CM**
Ø3.5/3.75/4.0
4.3/5.0



Scan Intraoral
EFF 9205 . 05A . P . CJ



Torque 15Ncm



Análogo Híbrido
EFF 305 . 05



Link para CAD/CAM

Large / Anti Rotacional
EFF 6805 . 05 . 5A cinta 0.8mm
EFF 6805 . 05 . 1A cinta 1.5mm
EFF 6805 . 05 . 2A cinta 2.5mm
EFF 6805 . 05 . 3A cinta 3.5mm
EFF 6805 . 05 . 4A cinta 4.5mm

Small / Anti Rotacional
EFF 6805 . 05 . 5A . S cinta 0.8mm
EFF 6805 . 05 . 1A . S cinta 1.5mm
EFF 6805 . 05 . 2A . S cinta 2.5mm
EFF 6805 . 05 . 3A . S cinta 3.5mm
EFF 6805 . 05 . 4A . S cinta 4.5mm

Large/Rotacional
EFF 6805 . 05 . 1B cinta 1.5mm
EFF 6805 . 05 . 2B cinta 2.5mm
EFF 6805 . 05 . 3B cinta 3.5mm
EFF 6805 . 05 . 4B cinta 4.5mm



Parafuso
Torque 20Ncm
EFF 2103 . 22A . 2 h 0.8/1.5/2.5mm
EFF 2103 . 22A . 3 h 3.5/4.5mm
EFF 2103 . 22F . 2 h 0.8/1.5/2.5mm
EFF 2103 . 22F . 3 h 3.5/4.5mm



Link Dinâmico

Large / Anti Rotacional
EFF 6805 . 05 . 5A . D cinta 0.8mm
EFF 6805 . 05 . 1A . D cinta 1.5mm
EFF 6805 . 05 . 2A . D cinta 2.5mm
EFF 6805 . 05 . 3A . D cinta 3.5mm
EFF 6805 . 05 . 4A . D cinta 4.5mm

Parafuso
Torque 20Ncm
EFF 2103 . 22A . 2 h 0.8/1.5/2.5mm
EFF 2103 . 22A . 3 h 3.5/4.5mm
EFF 2103 . 22F . 2 h 0.8/1.5/2.5mm
EFF 2103 . 22F . 3 h 3.5/4.5mm



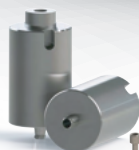
AnálogoLink

Large
EFF 330 . 01 . 1L
Small
EFF 330 . 01 . 1S



Interface para Zircônia
EFF 6905 . 05A - h 1.5mm

Parafuso para Zircônia
Torque 20Ncm
EFF 2103 . 09A



Abut. Rollings*

EFF 1505 . 05A . T
EFF 1505 . 05A . C

Parafuso
Torque 20Ncm
EFF 2103 . 22A . 2
EFF 2103 . 22F . 2

3Shape® EXOCAD®

**A3.2
ECM/Ø3.0**



Scan Intraoral
EFF 9205 . 29A . P . CJ



Torque 15Ncm



Análogo Híbrido
EFF 305 . 29



Link para CAD/CAM

Large / Anti Rotacional
EFF 6805 . 29A . 1 cinta 0.8mm
EFF 6805 . 29A . 2 cinta 1.5mm
EFF 6805 . 29A . 3 cinta 2.5mm
EFF 6805 . 29A . 4 cinta 3.5mm

Small / Anti Rotacional
EFF 6805 . 29A . 1 . S cinta 0.8mm
EFF 6805 . 29A . 2 . S cinta 1.5mm
EFF 6805 . 29A . 3 . S cinta 2.5mm
EFF 6805 . 29A . 4 . S cinta 3.5mm



Parafuso
Torque 20Ncm
EFF 2102 . 32E



Link Dinâmico

Large / Anti Rotacional
EFF 6805 . 29A . 1 . D cinta 0.8mm
EFF 6805 . 29A . 2 . D cinta 1.5mm
EFF 6805 . 29A . 3 . D cinta 2.5mm
EFF 6805 . 29A . 4 . D cinta 3.5mm



Parafuso
Torque 20Ncm
EFF 2102 . 32E
EFF 2102 . 34F



AnálogoLink

Large
EFF 330 . 01 . 1L
Small
EFF 330 . 01 . 1S



Interface para Zircônia
EFF 6905 . 29A . 1 - h 0.8mm

Parafuso para Zircônia
Torque 20Ncm
EFF 2102 . 41E



Abut. Rollings*

EFF 1505 . 29A . T
EFF 1505 . 29A . C

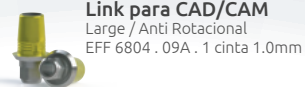
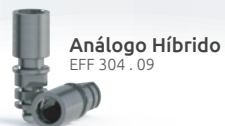
Parafuso
Torque 20Ncm
EFF 2102 . 32E

Componentes Sistema Neodent® Conexão Interna

 A2.1
Sistema-H&K-Industrieform

3Shape® EXOCAD®

A2.1
Ø4.3/5.0



Parafuso
Torque 20Ncm
EFF 2102 . 06A



Parafuso para Zircônia
Torque 20Ncm
EFF 2102 . 20A



Parafuso
Torque 20Ncm
EFF 2102 . 06A

Componentes Sistema Neodent® Conexão Externa



A1.1|A1.3|A1.4

Sistema Multi-Modelo

A1.1
Ø3.3



Scan Intraoral
EFF 9201 . 03A . P . CJ



A1.3
Ø4.3



Scan Intraoral
EFF 9201 . 05A . P . CJ



A1.4
Ø5.0



Scan Intraoral
EFF 9201 . 08A . P . CJ



3Shape® EXOCAD®



Análogo Híbrido
EFF 301 . 03



Análogo Híbrido
EFF 301 . 05



Análogo Híbrido
EFF 301 . 08



Link para CAD/CAM
Large / Anti Rotacional
EFF 6801 . 03A . 1 cinta 0.6mm
Large / Rotacional
EFF 6801 . 03B . 1 cinta 0.6mm



**Link para CAD/CAM
(Switching)**
Large / Anti Rotacional
EFF 6801 . 04A . 1 cinta 0.6mm
EFF 6801 . 04A . 2 cinta 2.0mm
EFF 6801 . 04A . 3 cinta 3.0mm
EFF 6801 . 04A . 4 cinta 4.0mm
Large / Rotacional
EFF 6801 . 04B . 1 cinta 1.0mm



Link para CAD/CAM
Large / Anti Rotacional
EFF 6801 . 08A . 1 cinta 0.6mm
Large / Rotacional
EFF 6801 . 08B . 1 cinta 0.6mm

Parafuso
Torque 20Ncm
EFF 2103 . 02A

Parafuso
Torque 32Ncm
EFF 2104 . 01A

Parafuso
Torque 32Ncm
EFF 2105 . 08A



Link para CAD/CAM
Large / Anti Rotacional
EFF 6801 . 03A . 1 . D cinta 0.6mm
Large / Rotacional
EFF 6801 . 03B . 1 . D cinta 0.6mm

Parafuso
Torque 20Ncm
EFF 2103 . 02A



AnálogoLink
Large
EFF 330 . 03 . 1L



Abut. Rollings*
EFF 1501 . 03A . T
EFF 1501 . 03A . C

Parafuso
Torque 20Ncm
EFF 2103 . 02A



Abut. Rollings*
EFF 1501 . 05A . T
EFF 1501 . 05A . C

Parafuso
Torque 32Ncm
EFF 2104 . 01A



Abut. Rollings*
EFF 1501 . 08A . T
EFF 1501 . 08A . C

Parafuso
Torque 32Ncm
EFF 2105 . 08A

Componentes Sistema Neodent® Pilares

 PGM|MPGM|MPGT

PGM



Scan Intraoral
EFF 9219 . 01A . P . CJ



MPGM



Scan Intraoral
Anti Rotacional
EFF 9215 . 01A . P . CJ
Rotacional
EFF 9215 . 01B . P . CJ



MPGT



Scan Intraoral
EFF 9216 . 01A . P . CJ



Análogo Híbrido
EFF 319 . 01



Análogo Híbrido
EFF 315 . 01



Análogo Híbrido
EFF 316 . 01



Link para CAD/CAM
Large / Anti Rotacional
EFF 6819 . 01A
Large / Rotacional
EFF 6819 . 01B



Link para CAD/CAM
Large / Anti Rotacional
EFF 6815 . 01A
Large / Rotacional
EFF 6815 . 01B



Link para CAD/CAM
Large / Anti Rotacional
EFF 6816 . 01A
Large / Rotacional
EFF 6816 . 01B

 Parafuso
Torque 32Ncm
EFF 2104 . 24E

 Parafuso
Torque 10Ncm
EFF 2101 . 12A

 Parafuso
Torque 32Ncm
EFF 2104 . 22A

3Shape® EXOCAD®

Componentes Sistema MIS® Cone Morse



T3.1|T3.2|T3.3

3Shape® EXOCAD®

T3.1
Ø3.3



Scan Intraoral
EFF 9205 . 40A . P . CJ



T3.2
Ø3.3



Scan Intraoral
EFF 9205 . 41A . P . CJ



T3.3
Ø3.75/3.9/
4.2/4.3



Scan Intraoral
EFF 9205 . 42A . P . CJ



Análogo Híbrido
EFF 305 . 40



Análogo Híbrido
EFF 305 . 41



Análogo Híbrido
EFF 305 . 42



Link para CAD/CAM
Small / Anti Rotacional
EFF 6805 . 40A . 1S cinta 0.5mm
EFF 6805 . 40A . 2S cinta 1.5mm
EFF 6805 . 40A . 3S cinta 3.0mm
Small / Rotacional
EFF 6805 . 40B . 1S cinta 0.5mm



1.30
Parafuso
Torque 20Ncm
EFF 2102 . 55A
EFF 2102 . 55F



Link para CAD/CAM
Small / Anti Rotacional
EFF 6805 . 41A . 1S cinta 0.5mm
EFF 6805 . 41A . 2S cinta 1.5mm
EFF 6805 . 41A . 3S cinta 3.0mm
Small / Rotacional
EFF 6805 . 40B . 1S cinta 0.5mm



1.30
Parafuso
Torque 20Ncm
EFF 2102 . 55A
EFF 2102 . 55F



Link para CAD/CAM
Large / Anti Rotacional
EFF 6805 . 42A . 1 cinta 0.5mm
EFF 6805 . 42A . 2 cinta 1.5mm
EFF 6805 . 42A . 3 cinta 3.0mm
Large / Rotacional
EFF 6805 . 42B . 1 cinta 0.5mm
Small / Anti Rotacional
EFF 6805 . 42A . 1S cinta 0.5mm
EFF 6805 . 42A . 2S cinta 1.5mm
EFF 6805 . 42A . 3S cinta 3.0mm
Small/Rotacional
EFF 6805 . 42B . 1S cinta 0.5mm



1.30
Parafuso
Torque 20Ncm
EFF 2103 . 14A
EFF 2103 . 14F



Link Dinâmico
Large/Anti Rotacional
EFF 6805 . 42A . 1 . D cinta 0.5mm
EFF 6805 . 42A . 2 . D cinta 1.5mm
EFF 6805 . 42A . 3 . D cinta 3.0mm
Large/ Rotacional
EFF 6805 . 42B . 1 . D cinta 0.5mm



1.30
Parafuso
Torque 20Ncm
EFF 2103 . 14A
EFF 2103 . 14F



AnálogoLink
Small
EFF 330 . 01 . 1S



AnálogoLink
Small
EFF 330 . 01 . 1S



AnálogoLink
Large
EFF 330 . 01 . 1L
Small
EFF 330 . 01 . 1S



Interface para Zircônia
EFF 6905 . 40A



Parafuso para Zircônia
Torque 20Ncm
EFF 2102 . 54A



Interface para Zircônia
EFF 6905 . 41A



Parafuso para Zircônia
Torque 20Ncm
EFF 2102 . 54A



Interface para Zircônia
EFF 6905 . 42A



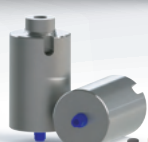
Parafuso para Zircônia
Torque 20Ncm
EFF 2103 . 42A



Abut. Rollings*
EFF 1505 . 40A . T
EFF 1505 . 40A . C



1.30
Parafuso
Torque 20Ncm
EFF 2102 . 55A
EFF 2102 . 55F



Abut. Rollings*
EFF 1505 . 41A . T
EFF 1505 . 41A . C



1.30
Parafuso
Torque 20Ncm
EFF 2102 . 55A
EFF 2102 . 55F



Abut. Rollings*
EFF 1505 . 42A . T
EFF 1505 . 42A . C



1.30
Parafuso
Torque 20Ncm
EFF 2103 . 14A
EFF 2103 . 14F

Componentes Sistema Plenum® Cone Morse

S **M** **P** Y3.1|Y3.2
Sistema-H&K-Industrial

Y3.1
SL|Ø3.0



Scan Intraoral
EFF 9205 . 37A . P . CJ



Y3.2
RE|Ø3.5



Scan Intraoral
EFF 9205 . 38A . P . CJ



Análogo Híbrido
EFF 305 . 37



Análogo Híbrido
EFF 305 . 38



Link para CAD/CAM
Small / Anti Rotacional
EFF 6805 . 37A . 1S cinta 1.0mm
EFF 6805 . 37A . 2S cinta 2.0mm
EFF 6805 . 37A . 3S cinta 3.0mm
EFF 6805 . 37A . 4S cinta 4.0mm
EFF 6805 . 37A . 5S cinta 5.0mm
EFF 6805 . 37A . 6S cinta 6.0mm

Parafuso
Torque 10Ncm
EFF 2101 . 65A . 1
cintas 1.0/2.0/3.0mm
EFF 2101 . 65A . 2
cintas 4.0/5.0/6.0mm



Link para CAD/CAM
Large / Anti Rotacional
EFF 6805 . 38A . 1 cinta 1.0mm
EFF 6805 . 38A . 2 cinta 2.0mm
EFF 6805 . 38A . 3 cinta 3.0mm
EFF 6805 . 38A . 4 cinta 4.0mm
EFF 6805 . 38A . 5 cinta 5.0mm
EFF 6805 . 38A . 6 cinta 6.0mm

Parafuso
Torque 10Ncm
EFF 2102 . 66A . 1
cintas 1.0/2.0/3.0mm
EFF 2102 . 66A . 2
cintas 4.0/5.0/6.0mm



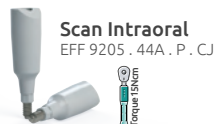
AnálogoLink
Small
EFF 330 . 01 . 1S



AnálogoLink
Large
EFF 330 . 01 . 1L

3Shape® EXOCAD®

U3.1
Ø3.5



Componentes
Sistema Anthogyr® Cone Morse

 **M3.1**
Sistema-H&K-Industrie

3Shape® EXOCAD®

M3.1
Ø3.4/4.0
/4.6/5.2



Link para CAD/CAM
Large / Anti Rotacional
EFF 6805 . 16A . 1 cinta 0.8mm



Parafuso
Torque 20Ncm
EFF 2101 . 09A

Componentes Sistema SIN® Cone Morse

S **M** **P** C3.1|A3.1

Sistema Multi-Modular

C3.1
Strong®
Ø3.5/Ø3.8/
/Ø4.5/Ø5.5



Scan Intraoral
EFF 9205 . 10A . P . CJ



A3.1
UniLite® SWC
Ø3.5/Ø3.75/
/Ø4.0/Ø4.3/Ø5.0



Scan Intraoral
EFF 9205 . 05A . P . CJ



Análogo Híbrido
EFF 305 . 10



Análogo Híbrido
EFF 305 . 05



Link para CAD/CAM
Large / Anti Rotacional
EFF 6805 . 10A . 1 cinta 1.5mm



Parafuso
Torque 20Ncm
EFF 2102 . 24A



Link para CAD/CAM

Large / Anti Rotacional
EFF 6805 . 05 . 5A cinta 0.8mm
EFF 6805 . 05 . 1A cinta 1.5mm
EFF 6805 . 05 . 2A cinta 2.5mm
EFF 6805 . 05 . 3A cinta 3.5mm
EFF 6805 . 05 . 4A cinta 4.5mm

Large/Rotacional
EFF 6805 . 05 . 1B cinta 1.5mm
EFF 6805 . 05 . 2B cinta 2.5mm
EFF 6805 . 05 . 3B cinta 3.5mm
EFF 6805 . 05 . 4B cinta 4.5mm



Parafuso
Torque 20Ncm
EFF 2103 . 22A . 2 h 0.8/1.5/2.5mm
EFF 2103 . 22A . 3 h 3.5/4.5mm
EFF 2103 . 22F . 2 h 0.8/1.5/2.5mm
EFF 2103 . 22F . 3 h 3.5/4.5mm



Link Dinâmico

Large / Anti Rotacional
EFF 6805 . 05 . 5A . D cinta 0.8mm
EFF 6805 . 05 . 1A . D cinta 1.5mm
EFF 6805 . 05 . 2A . D cinta 2.5mm
EFF 6805 . 05 . 3A . D cinta 3.5mm
EFF 6805 . 05 . 4A . D cinta 4.5mm



Parafuso
Torque 20Ncm
EFF 2103 . 22A . 2 h 0.8/1.5/2.5mm
EFF 2103 . 22A . 3 h 3.5/4.5mm
EFF 2103 . 22F . 2 h 0.8/1.5/2.5mm
EFF 2103 . 22F . 3 h 3.5/4.5mm



AnálogoLink

Large
EFF 330 . 01 . 1L
Small
EFF 330 . 01 . 1S



Interface para Zircônia
EFF 6905 . 10A



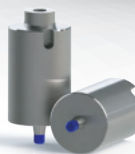
Parafuso para Zircônia
Torque 20Ncm
EFF 2102 . 18A



Interface para Zircônia
EFF 6905 . 05A - h 1.5mm



Parafuso para Zircônia
Torque 20Ncm
EFF 2103 . 09A



Abut. Rollings*
EFF 1505 . 10A . T
EFF 1505 . 10A . C



Parafuso
Torque 20Ncm
EFF 2102 . 24A



Abut. Rollings*
EFF 1505 . 05A . T
EFF 1505 . 05A . C



Parafuso
Torque 20Ncm
EFF 2103 . 22A . 2
EFF 2103 . 22F . 2

Componentes Sistema SIN® Conexão Interna

 B2.1|B2.2|B2.3

3Shape® EXOCAD®

B2.1
Ø3.4



Scan Intraoral
EFF 9204 . 01A . P . CJ



B2.2
Ø4.1



Scan Intraoral
EFF 9204 . 02A . P . CJ



B2.3
Ø5.0



Scan Intraoral
EFF 9204 . 03A . P . CJ



Análogo Híbrido
EFF 304 . 01



Análogo Híbrido
EFF 304 . 02



Análogo Híbrido
EFF 304 . 03



Link para CAD/CAM
Large / Anti Rotacional
EFF 6804 . 01A . 1 cinta 1.0mm
EFF 6804 . 01A . 2 cinta 2.0mm
EFF 6804 . 01A . 3 cinta 3.0mm

Parafuso
Torque 20Ncm
EFF 2102 . 06A



Link para CAD/CAM
Large / Anti Rotacional
EFF 6804 . 02A . 1 cinta 1.0mm
EFF 6804 . 02A . 2 cinta 2.0mm
EFF 6804 . 02A . 3 cinta 3.0mm

Parafuso
Torque 20Ncm
EFF 2102 . 06A



Link para CAD/CAM (Switching)
Large / Anti Rotacional
EFF 6804 . 02A . 1 cinta 1.0mm
EFF 6804 . 02A . 2 cinta 2.0mm
EFF 6804 . 02A . 3 cinta 3.0mm

Parafuso
Torque 20Ncm
EFF 2102 . 06A



AnálogoLink
Large
EFF 330 . 02 . 1L



Interface para Zircônia
EFF 6904 . 01A

Parafuso para Zircônia
Torque 20Ncm
EFF 2102 . 15A



Interface para Zircônia
EFF 6904 . 02A

Parafuso para Zircônia
Torque 20Ncm
EFF 2102 . 15A



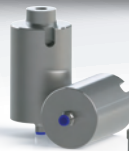
Interface para Zircônia
EFF 6904 . 02A

Parafuso para Zircônia
Torque 20Ncm
EFF 2102 . 15A



Abut. Rollings*
EFF 1504 . 01A . T
EFF 1504 . 01A . C

Parafuso
Torque 20Ncm
EFF 2102 . 06A



Abut. Rollings*
EFF 1504 . 02A . T
EFF 1504 . 02A . C

Parafuso
Torque 20Ncm
EFF 2102 . 06A



Abut. Rollings*
EFF 1504 . 03A . T
EFF 1504 . 03A . C

Parafuso
Torque 20Ncm
EFF 2102 . 06A

Componentes Sistema SIN® Conexão Externa



B1.1|B1.2|B1.3

B1.1
Ø3.4



Scan Intraoral
EFF 9201 . 02A . P . CJ



B1.2
Ø4.1



Scan Intraoral
EFF 9201 . 04A . P . CJ



B1.3
Ø5.0



**Scan Intraoral
(Switching)**
EFF 9201 . 04A . P . CJ



Análogo Híbrido
EFF 301 . 02



Análogo Híbrido
EFF 301 . 04



Análogo Híbrido
EFF 301 . 07



Link para CAD/CAM
Large / Anti Rotacional
EFF 6801 . 02A . 1 cinta 0.6mm



Link para CAD/CAM
Large / Anti Rotacional
EFF 6801 . 04A . 1 cinta 0.6mm
EFF 6801 . 04A . 2 cinta 2.0mm
EFF 6801 . 04A . 3 cinta 3.0mm
EFF 6801 . 04A . 4 cinta 4.0mm
Large / Rotacional
EFF 6801 . 04B . 1 cinta 1.0mm



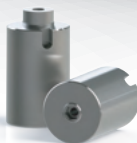
**Link para CAD/CAM
(Switching)**
Large / Anti Rotacional
EFF 6801 . 04A . 1 cinta 0.60mm
EFF 6801 . 04A . 2 cinta 2.00mm
EFF 6801 . 04A . 3 cinta 3.00mm



Link Dinâmico
Large/Anti Rotacional
EFF 6801 . 04A . 1 . D cinta 0.6mm
EFF 6801 . 04A . 2 . D cinta 2.0mm
EFF 6801 . 04A . 3 . D cinta 3.0mm
EFF 6801 . 04A . 4 . D cinta 4.0mm
Large / Rotacional
EFF 6801 . 04B . 1 . D cinta 1.0mm



AnálogoLink
Large
EFF 330 . 01 . 1L



Abut. Rollings*
EFF 1501 . 02A . T
EFF 1501 . 02A . C



Abut. Rollings*
EFF 1501 . 04A . T
EFF 1501 . 04A . C



**Abut. Rollings*
(Switching)**
EFF 1501 . 04A . T
EFF 1501 . 04A . C



Componentes Sistema Conexão® Conexão Interna

 C2.1|C2.2|C2.3

Sistema-H&K-Industrieformid

3Shape® EXOCAD®

C1.2/C2.2/C2.3
Ø4.1|4.3|
5.0|6.0



Scan Intraoral
EFF 9204 . 11A . P . CJ



Análogo Híbrido
EFF 304 . 11



Link para CAD/CAM
Large / Anti Rotacional
EFF 6804 . 11A . 1 cinta 1.0mm
EFF 6804 . 11A . 2 cinta 2.0mm
EFF 6804 . 11A . 3 cinta 3.0mm

Parafuso
Torque 20Ncm
EFF 2103 . 18A



Interface para Zircônia
EFF 6904 . 11A

Parafuso Unigrip para Zircônia
Torque 20Ncm
EFF 2103 . 11A



Abut. Rollings*
EFF 1504 . 11A . T
EFF 1504 . 11A . C

Parafuso
Torque 20Ncm
EFF 2103 . 18A

Componentes Sistema SignoVinces® Cone Morse



Q3.1|Q3.2

Q3.1
Ø4.0



Scan Intraoral
EFF 9205 . 12A . P . CJ



Torque 15Ncm



Análogo Híbrido
EFF 305 . 12



Link para CAD/CAM
Large /Anti Rotacional
EFF 6805 . 12A . 1 cinta 1.5mm



Parafuso
Torque 20Ncm
EFF 2102 . 06A



Link Dinâmico
Large /Anti Rotacional
EFF 6805 . 12A . 1 . D cinta 1.5mm



Parafuso
Torque 20Ncm
EFF 2102 . 06A



AnálogoLink
Large
EFF 330 . 01 . 1L



Interface para Zircônia
EFF 6905 . 12A



Parafuso para Zircônia
Torque 20Ncm
EFF 2102 . 15A



Abut. Rollings*
EFF 1505 . 12A . T
EFF 1505 . 12A . C



Parafuso
Torque 20Ncm
EFF 2102 . 06A

3Shape® EXOCAD®

Q3.2
Ø4.5/5.0



Scan Intraoral
EFF 9205 . 13A . P . CJ



Torque 15Ncm



Análogo Híbrido
EFF 305 . 13



Link para CAD/CAM
Large /Anti Rotacional
EFF 6805 . 13A . 1 cinta 1.5mm



Parafuso
Torque 32Ncm
EFF 2104 . 20A



AnálogoLink
Large
EFF 330 . 02 . 1L

Componentes Sistema Astra Tech® Cone Morse

S **M** **P** Q3.3|Q3.4|Q3.5|Q3.6

3Shape® EXOCAD®

Q3.3
Ø4.6/5.0



Q3.4
Ø4.2



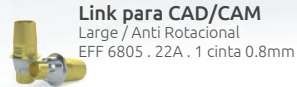
Q3.5
Ø4.8



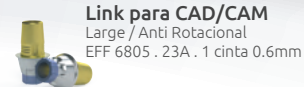
Q3.6
Ø5.4



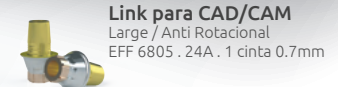
Parafuso
Torque 20Ncm
EFF 2102 . 29A



Parafuso
Torque 20Ncm
EFF 2103 . 27A



Parafuso
Torque 32Ncm
EFF 2104 . 21A



Parafuso
Torque 32Ncm
EFF 2104 . 21A



Componentes Sistema Frialit® Conexão Interna



02.2|02.3|02.4

3Shape® EXOCAD®

02.2
Ø3.8



Scan Intraoral

Rosca de Ø1.6
EFF 9204 . 05A . 1 . P . CJ
Rosca de Ø1.8
EFF 9204 . 05A . 2 . P . CJ



02.3
Ø4.5



Scan Intraoral

Rosca de Ø1.6
EFF 9204 . 06A . 1 . P . CJ
Rosca de Ø1.8
EFF 9204 . 06A . 2 . P . CJ



02.4
Ø5.5



Scan Intraoral (Switching)

Rosca de Ø1.6
EFF 9204 . 06A . 1 . P . CJ
Rosca de Ø1.8
EFF 9204 . 06A . 2 . P . CJ



Análogo Híbrido

Rosca Ø 1.60
EFF 304 . 05
Rosca Ø 1.80
EFF 304 . 05 . 1



Análogo Híbrido

Rosca Ø 1.60
EFF 304 . 06
Rosca Ø 1.80
EFF 304 . 06 . 1



Análogo Híbrido

Rosca Ø 1.60
EFF 304 . 07
Rosca Ø 1.80
EFF 304 . 07 . 1



Link para CAD/CAM

Large / Anti Rotacional
EFF 6804 . 05A . 1 cinta 1.0mm
EFF 6804 . 05A . 2 cinta 2.0mm
EFF 6804 . 05A . 3 cinta 3.0mm



Link para CAD/CAM

Large / Anti Rotacional
EFF 6804 . 06A . 1 cinta 1.0mm
EFF 6804 . 06A . 2 cinta 2.0mm
EFF 6804 . 06A . 3 cinta 3.0mm



Link para CAD/CAM (Switching)

Large / Anti Rotacional
EFF 6804 . 06A . 1 cinta 1.0mm
EFF 6804 . 06A . 2 cinta 2.0mm
EFF 6804 . 06A . 3 cinta 3.0mm



Parafuso
Torque 20Ncm
Rosca de Ø1.6
EFF 2102 . 14A
Rosca de Ø1.8
EFF 2103 . 15A



Parafuso
Torque 20Ncm
Rosca de Ø1.6
EFF 2102 . 14A
Rosca de Ø1.8
EFF 2103 . 15A



Parafuso
Torque 20Ncm
Rosca de Ø1.6
EFF 2102 . 14A
Rosca de Ø1.8
EFF 2103 . 15A



Interface para Zircônia

EFF 6904 . 05A



Parafuso para Zircônia
Torque 20Ncm
Rosca de Ø1.6
EFF 2102 . 15A
Rosca de Ø1.8
EFF 2103 . 11A



Interface para Zircônia (Switching)

EFF 6904 . 05A



Parafuso para Zircônia
Torque 20Ncm
Rosca de Ø1.6
EFF 2102 . 15A
Rosca de Ø1.8
EFF 2103 . 11A

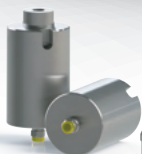


Interface para Zircônia (Switching)

EFF 6904 . 05A



Parafuso para Zircônia
Torque 20Ncm
Rosca de Ø1.6
EFF 2102 . 15A
Rosca de Ø1.8
EFF 2103 . 11A



Abut. Rollings*

EFF 1504 . 05A . T
EFF 1504 . 05A . C



Parafuso
Torque 20Ncm
Rosca de Ø1.6
EFF 2102 . 14A
Rosca de Ø1.8
EFF 2103 . 15A

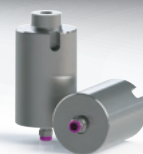


Abut. Rollings*

EFF 1504 . 06A . T
EFF 1504 . 06A . C



Parafuso
Torque 20Ncm
Rosca de Ø1.6
EFF 2102 . 14A
Rosca de Ø1.8
EFF 2103 . 15A



Abut. Rollings*

EFF 1504 . 07A . T
EFF 1504 . 07A . C



Parafuso
Torque 20Ncm
Rosca de Ø1.6
EFF 2102 . 14A
Rosca de Ø1.8
EFF 2103 . 15A

Componentes Sistema Dentoflex® Conexão Interna

S **M** **P** **G2.1|G2.2|G2.3**
Sistema-HiK-Instalformid

3Shape® EXOCAD®

G2.1
Ø3.25



Scan Intraoral
EFF 9203 . 08A . P . CJ



G2.2
Ø3.5



Scan Intraoral
EFF 9203 . 09A . P . CJ



G2.3
Ø3.75



Scan Intraoral
EFF 9203 . 10A . P . CJ



Análogo Híbrido
EFF 303 . 08



Análogo Híbrido
EFF 303 . 09



Análogo Híbrido
EFF 303 . 10



Link para CAD/CAM
Large / Anti Rotacional
EFF 6803 . 08A . 1 cinta 1.0mm
EFF 6803 . 08A . 2 cinta 2.0mm
EFF 6803 . 08A . 3 cinta 3.0mm



Link para CAD/CAM
Large / Anti Rotacional
EFF 6803 . 09A . 1 cinta 1.0mm
EFF 6803 . 09A . 2 cinta 2.0mm
EFF 6803 . 09A . 3 cinta 3.0mm



Link para CAD/CAM
Large / Anti Rotacional
EFF 6803 . 10A . 1 cinta 1.0mm



Link Dinâmico
Large / Anti Rotacional
EFF 6803 . 08A . 1 . D cinta 1.0mm
EFF 6803 . 08A . 2 . D cinta 2.0mm
EFF 6803 . 08A . 3 . D cinta 3.0mm



Link Dinâmico
Large/Anti Rotacional
EFF 6803 . 09A . 1 . D cinta 1.0mm
EFF 6803 . 09A . 2 . D cinta 2.0mm
EFF 6803 . 09A . 3 . D cinta 3.0mm



Link Dinâmico
Large / Anti Rotacional
EFF 6803 . 10A . 1 . D cinta 1.0mm



AnálogoLink
Large
EFF 330 . 01 . 1L



AnálogoLink
Large
EFF 330 . 01 . 1L



AnálogoLink
Large
EFF 330 . 01 . 1L

Componentes Sistema Biomet 3i™ Conexão Interna



L2.1|L2.2|L2.3

3Shape® EXOCAD®

L2.1
Ø3.4



Scan Intraoral
EFF 9204 . 01A . P . CJ



Torque 18Ncm

L2.2
Ø4.1



Scan Intraoral
EFF 9204 . 02A . P . CJ



Torque 18Ncm

L2.3
Ø5.0



Scan Intraoral
EFF 9204 . 03A . P . CJ



Torque 15Ncm



Análogo Híbrido
EFF 304 . 01



Análogo Híbrido
EFF 304 . 02



Análogo Híbrido
EFF 304 . 03



Link para CAD/CAM
Large / Anti Rotacional
EFF 6804 . 01A . 1 cinta 1.0mm
EFF 6804 . 01A . 2 cinta 2.0mm
EFF 6804 . 01A . 3 cinta 3.0mm



Parafuso
Torque 20Ncm
EFF 2102 . 06A



Link para CAD/CAM
Large / Anti Rotacional
EFF 6804 . 02A . 1 cinta 1.0mm
EFF 6804 . 02A . 2 cinta 2.0mm
EFF 6804 . 02A . 3 cinta 3.0mm



Parafuso
Torque 20Ncm
EFF 2102 . 06A



Link para CAD/CAM (Switching)
Large / Anti Rotacional
EFF 6804 . 02A . 1 cinta 1.0mm
EFF 6804 . 02A . 2 cinta 2.0mm
EFF 6804 . 02A . 3 cinta 3.0mm



Parafuso
Torque 20Ncm
EFF 2102 . 06A



Interface para Zircônia
EFF 6904 . 01A



Parafuso para Zircônia
Torque 20Ncm
EFF 2102 . 15A



Interface para Zircônia
EFF 6904 . 02A



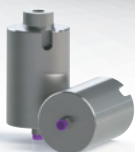
Parafuso para Zircônia
Torque 20Ncm
EFF 2102 . 15A



Interface para Zircônia (Switching)
EFF 6904 . 02A



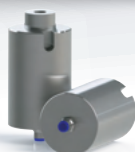
Parafuso para Zircônia
Torque 20Ncm
EFF 2102 . 15A



Abut. Rollings*
EFF 1504 . 01A . T
EFF 1504 . 01A . C



Parafuso
Torque 20Ncm
EFF 2102 . 06A



Abut. Rollings*
EFF 1504 . 02A . T
EFF 1504 . 02A . C



Parafuso
Torque 20Ncm
EFF 2102 . 06A



Abut. Rollings*
EFF 1504 . 03A . T
EFF 1504 . 03A . C



Parafuso
Torque 20Ncm
EFF 2102 . 06A

Componentes Sistema Biomet 3i™ Conexão Externa



L1.1|L1.2|L1.3

3Shape® EXOCAD®

L1.1
Ø3.4



Scan Intraoral
EFF 9201 . 02A . P . CJ



L1.2
Ø4.1



Scan Intraoral
EFF 9201 . 04A . P . CJ



L1.3
Ø5.0



Scan Intraoral
EFF 9201 . 04A . P . CJ



Análogo Híbrido
EFF 301 . 02



Análogo Híbrido
EFF 301 . 04



Análogo Híbrido
EFF 301 . 07



Link para CAD/CAM
Large / Anti Rotacional
EFF 6801 . 02A . 1 cinta 0.6mm



Link para CAD/CAM
Large / Anti Rotacional
EFF 6801 . 04A . 1 cinta 0.6mm
EFF 6801 . 04A . 2 cinta 2.0mm
EFF 6801 . 04A . 3 cinta 3.0mm
EFF 6801 . 04A . 4 cinta 4.0mm
Large / Rotacional
EFF 6801 . 04B . 1 cinta 1.0mm



Link para CAD/CAM
Large / Anti Rotacional
EFF 6801 . 04A . 1 cinta 0.6mm
EFF 6801 . 04A . 2 cinta 2.0mm
EFF 6801 . 04A . 3 cinta 3.0mm



Link Dinâmico
Large / Anti Rotacional
EFF 6801 . 04A . 1 . D cinta 0.6mm
EFF 6801 . 04A . 2 . D cinta 2.0mm
EFF 6801 . 04A . 3 . D cinta 3.0mm
EFF 6801 . 04A . 4 . D cinta 4.0mm



Large / Rotacional
EFF 6801 . 04B . 1 . D cinta 1.0mm



AnálogoLink
Large
EFF 330 . 03 . 1L

Componentes Sistema Implacil® Cone Morse

D3.1
Sistema Multi-Modelo

3Shape® EXOCAD®

D3.1
Ø3.5



Scan Intraoral
EFF 9205 . 25A . P . CJ



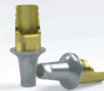
Análogo Híbrido
EFF 305 . 25



Link para CAD/CAM
Large / Anti Rotacional
EFF 6805 . 25A . 1 cinta 0.8mm
EFF 6805 . 25A . 2 cinta 1.5mm
EFF 6805 . 25A . 3 cinta 2.5mm



Parafuso
Torque 20Ncm
Para h.0.80/1.50/2.50mm
EFF 2103 . 22A . 2



Link Dinâmico
Large / Anti Rotacional
EFF 6805 . 25A . 1 . D cinta 0.8mm
EFF 6805 . 25A . 2 . D cinta 1.5mm
EFF 6805 . 25A . 3 . D cinta 2.5mm



Parafuso
Torque 20Ncm
Para h.0.80/1.50/2.50mm
EFF 2103 . 22A . 2



AnálogoLink
Large
EFF 330 . 02 . 1L



Interface para Zircônia
EFF 6905 . 25A



Parafuso para Zircônia
Torque 20Ncm
EFF 2103 . 09A



Abut. Rollings*
EFF 1505 . 25A . T
EFF 1505 . 25A . C



Parafuso
Torque 20Ncm
Para h.0.80/1.50/2.50mm
EFF 2103 . 22A . 2
Para h. 3.50/4.50mm
EFF 2103 . 22A . 3

Componentes Sistema Implacil® Conexão Interna

S **M** **P** **D2.1|D2.2|D2.3**
Sistema-Implacil

3Shape® EXOCAD®

D2.1
Ø3.5



Scan Intraoral
EFF 9203 . 01A . P . CJ



D2.2
Ø4.0



Scan Intraoral
EFF 9203 . 02A . P . CJ



D2.3
Ø5.0



Scan Intraoral
EFF 9203 . 03A . P . CJ



Análogo Híbrido
EFF 303 . 01



Análogo Híbrido
EFF 303 . 02



Análogo Híbrido
EFF 303 . 03



Link para CAD/CAM
Large / Anti Rotacional
EFF 6803 . 01A . 1 cinta 1.0mm
EFF 6803 . 01A . 2 cinta 2.0mm
EFF 6803 . 01A . 3 cinta 3.0mm



Link para CAD/CAM
Large / Anti Rotacional
EFF 6803 . 02A . 1 cinta 1.0mm
EFF 6803 . 02A . 2 cinta 2.0mm
EFF 6803 . 02A . 3 cinta 3.0mm



Link para CAD/CAM
Large / Anti Rotacional
EFF 6803 . 03A . 1 cinta 1.0mm
EFF 6803 . 03A . 2 cinta 2.0mm
EFF 6803 . 03A . 3 cinta 3.0mm



Link Dinâmico
Large / Anti Rotacional
EFF 6803 . 01A . 1 . D cinta 1.0mm
EFF 6803 . 01A . 2 . D cinta 2.0mm
EFF 6803 . 01A . 3 . D cinta 3.0mm



Link Dinâmico
Large / Anti Rotacional
EFF 6803 . 02A . 1 . D cinta 1.0mm
EFF 6803 . 02A . 2 . D cinta 2.0mm
EFF 6803 . 02A . 3 . D cinta 3.0mm



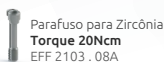
AnálogoLink
Large
EFF 330 . 01 . 1L



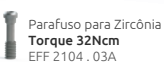
AnálogoLink
Large
EFF 330 . 01 . 1L



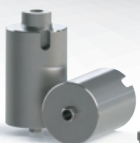
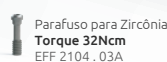
Interface para Zircônia
EFF 6903 . 01A



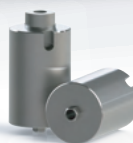
Interface para Zircônia
EFF 6903 . 02A



Interface para Zircônia
EFF 6903 . 03A



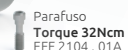
Abut. Rollings*
EFF 1503 . 01A . T
EFF 1503 . 01A . C



Abut. Rollings*
EFF 1503 . 02A . T
EFF 1503 . 02A . C



Abut. Rollings*
EFF 1503 . 03A . T
EFF 1503 . 03A . C



Componentes Sistema Implacil® Conexão Externa

 D1.1
Sistema Multi-Modelo

3Shape® EXOCAD®

D1.1
Ø3.3



Scan Intraoral
EFF 9201 . 16A . P . CJ



Análogo Híbrido
EFF 301 . 16



Link para CAD/CAM
Large / Anti Rotacional
EFF 6801 . 01A . 1
Large / Rotacional
EFF 6801 . 01B . 1



Parafuso
Torque 20Ncm
EFF 2103 . 02A



AnálogoLink
Large
EFF 330 . 01 . 1L

Componentes Sistema Serson® Conexão Interna

 X2.1
Sistema-H&K-Industriemid

3Shape® EXOCAD®

X2.1
Ø4.0



Scan Intraoral
EFF 9203 . 34A . P . CJ



Análogo Híbrido
EFF 303 . 34



Link para CAD/CAM
Large / Anti Rotacional
EFF 6803 . 34A . 1 cinta 1.0mm



Parafuso
Torque 32Ncm
EFF 2104 . 01A



Link Dinâmico
Large / Anti Rotacional
EFF 6803 . 34A . D cinta 1.0mm



Parafuso
Torque 32Ncm
EFF 2104 . 01A



AnálogoLink
Large
EFF 330 . 01 . 1L

Componentes Sistema TitaniumFix® Conexão Interna

 E2.1
Sistema Multi-Modelo

3Shape® EXOCAD®

E2.1
Ø3.75/5.0



Scan Intraoral
EFF 9203 . 04A . P . CJ



Análogo Híbrido
EFF 303 . 04



Link para CAD/CAM
Large / Anti Rotacional
EFF 6803 . 04A . 1 cinta de 1.0mm



Parafuso
Torque 20Ncm
EFF 2103 . 25A



Link Dinâmico
Large / Anti Rotacional
EFF 6803 . 04A . D cinta de 1.0mm



Parafuso
Torque 20Ncm
EFF 2103 . 25A



AnálogoLink
Large
EFF 330 . 01 . 1L

Componentes Sistema TitaniumFix® Conexão Externa

 E1.1
Sistema-HiK-Instalador

3Shape® EXOCAD®

E1.1
Ø33



Scan Intraoral
EFF 9201 . 12A . P . CJ



Análogo Híbrido
EFF 301 . 12



Link para CAD/CAM
Large / Anti Rotacional
EFF 6801 . 01A . 1 cinta 0.6mm
Large / Rotacional
EFF 6801 . 01B . 1 cinta 0.6mm



Parafuso
Torque 20Ncm
EFF 2106 . 01A



AnálogoLink
Large
EFF 330 . 01 . 1L

Componentes Sistema Camlog® Conexão Interna



P2.1|P2.2|P2.3

3Shape® EXOCAD®

P2.1
Ø3.3



Scan Intraoral
EFF 9202 . 05A . P . CJ
Torque 18Ncm

P2.2
Ø3.8



Scan Intraoral
EFF 9202 . 06A . P . CJ
Torque 18Ncm

P2.3
Ø4.3



Scan Intraoral
EFF 9202 . 07A . P . CJ
Torque 15Ncm



Análogo Híbrido
EFF 302 . 05



Análogo Híbrido
EFF 302 . 06



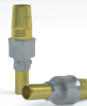
Análogo Híbrido
EFF 302 . 07



Link para CAD/CAM
Large / Anti Rotacional
EFF 6802 . 05A . 1 cinta 0.30mm
EFF 6802 . 05A . 2 cinta 1.50mm
EFF 6802 . 05A . 3 cinta 2.50mm



Parafuso
Torque 20Ncm
EFF 2102 . 04A



Link para CAD/CAM
Large / Anti Rotacional
EFF 6802 . 06A . 1 cinta 0.30mm
EFF 6802 . 06A . 2 cinta 1.50mm
EFF 6802 . 06A . 3 cinta 2.50mm



Parafuso
Torque 32Ncm
EFF 2104 . 06A



Link para CAD/CAM
Large / Anti Rotacional
EFF 6802 . 07A . 1 cinta 0.30mm
EFF 6802 . 07A . 2 cinta 1.50mm
EFF 6802 . 07A . 3 cinta 2.50mm



Parafuso
Torque 32Ncm
EFF 2104 . 06A



AnálogoLink
Large
EFF 330 . 01 . 1L



AnálogoLink
Large
EFF 330 . 01 . 1L



AnálogoLink
Large
EFF 330 . 02 . 1L

Componentes Sistema Camlog® Conexão Interna

S **M** **P** P2.4|P2.5
Sistema-HiK-Instalformid

P2.4
Ø5.0



Scan Intraoral
EFF 9202 . 08A . P . CJ



P2.5
Ø6.0



Scan Intraoral
EFF 9202 . 08A . P . CJ



Análogo Híbrido
EFF 302 . 08

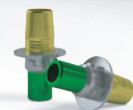


Análogo Híbrido
EFF 302 . 09



Link para CAD/CAM
Large /Anti Rotacional
EFF 6802 . 08A . 1 cinta 0.30mm
EFF 6802 . 08A . 2 cinta 1.50mm
EFF 6802 . 08A . 3 cinta 2.50mm

Parafuso
Torque 32Ncm
EFF 2104 . 06A



Link para CAD/CAM
Large /Anti Rotacional
EFF 6802 . 09A . 1 cinta 1.00mm
EFF 6802 . 09A . 2 cinta 1.50mm
EFF 6802 . 09A . 3 cinta 2.50mm

Parafuso
Torque 32Ncm
EFF 2104 . 06A



AnálogoLink
Large
EFF 330 . 03 . 1L



AnálogoLink
Large
EFF 330 . 05 . 1L

3Shape® EXOCAD®

Componentes Prótese Parafusada



M.P.|M.P.L.1|EONE

Systeme Multi-Modelliert

M.P.

Scan Intraoral

EFF 9211 . 01A . P . CJ



Torque 15Ncm

M.P.L1

Scan Intraoral

EFF 9211 . 02A . P . CJ



Torque 15Ncm

EONE

Scan Intraoral

EFF 9218 . 01A . P . CJ



Torque 15Ncm



Análogo Híbrido

EFF 311 . 01



Análogo Híbrido

EFF 311 . 02



Análogo Híbrido

EFF 318 . 01



Link para CAD/CAM

EFF 6811 . 01



Link para CAD/CAM

EFF 6811 . 02



Link para CAD/CAM

Anti Rotacional
EFF 6818 . 01A
Rotacional
EFF 6818 . 01B



Parafuso

Torque 10Ncm

EFF 2101 . 01A h4.1mm
EFF 2101 . 01A . SAE h 4.6mm



Parafuso

Torque 20Ncm

EFF 2103 . 01C



Parafuso

Torque 32Ncm

EFF 2104 . 38A
EFF 2104 . 38F

3Shape® EXOCAD®

Componentes Prótese Parafusada



M.P.L.2|EST|F1.1/F1.2

M.P.L.2

Scan Intraoral
EFF 9211 . 03A . P . CJ



EST.

Scan Intraoral
EFF 9212 . 02A . P . CJ



F1.1/F1.2

Scan Intraoral
EFF 9201 . 14A . P . CJ para F1.1
EFF 9201 . 13A . P . CJ para F1.2



Análogo Híbrido
EFF 311 . 03



Análogo Híbrido
EFF 312 . 01



Análogo Híbrido
EFF 301 . 14 para F1.1
EFF 301 . 13 para F1.2





effdental.com.br

☎ 11 3059.2200 | ✉ atendimento@effdental.com.br

Nos encontre no Facebook
@effdental



Siga a EFF no Instagram
@effdental



Nos siga no YouTube
EFF Dental Componentes



Nos encontre no LinkedIn
EFF Dental Componentes

