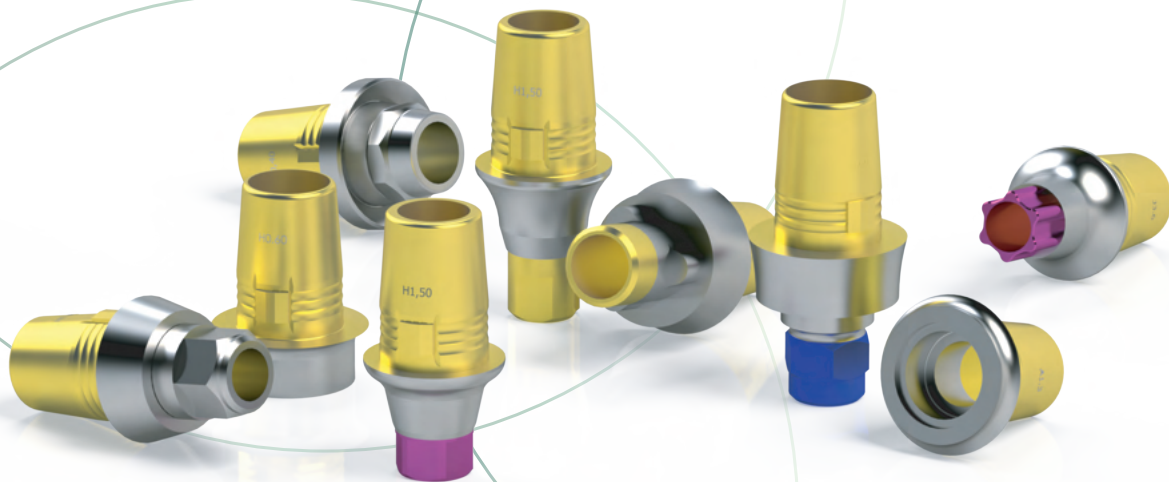




Especialista em
Componentes Digitais

CEREC®



Exporta para o exterior desde 2011.

Aperfeiçoando tecnologias

A EFF Dental e a tecnologia digital vieram garantir processos de alta qualidade com menos demanda de tempo...

...tempo esse, que você, profissional, terá para curtir a vida!




Usuário CEREC[®] confira, e descubra como podemos

Facilitar o seu dia a dia!



Escaneie o QR CODE e baixe os catálogos de Componentes Digitais EFF Dental

Aplicação	Tipo da Conexão		Página
Nobel Biocare® NP RP WP	Conexão Externa	K1.1 K1.2 K1.3	4
Nobel Biocare® NP RP WP	Conexão Interna	K2.1 K2.2 K2.3	4
Nobel Biocare® 3.0 NP RP WP	Cone Morse	K3.1 K3.2 K3.3 K3.5	5
Straumann® SC NC RC	Cone Morse	J3.5 J3.3 J3.4	6
Straumann® RB WB	Cone Morse	J3.6 J3.7	6
Straumann® RN WN	Cone Morse	J3.1 J3.2	7
Straumann® NT RT WT	Cone Morse	J3.9 J3.10 J3.11	7
Neodent®	Conexão Externa	A1.1 A1.3 A1.4	8
Neodent®	Conexão Interna	A2.1	8
Neodent® CM GM	Cone Morse	A3.1 A3.2	9
MIS® C1 V3 Narrow C1 V3 Standard	Cone Morse	T3.1 T3.2 T3.3	10
Plenum® SL RE	Cone Morse	Y3.1 Y3.2	12
Bionnovation® BioMorse®	Cone Morse	U3.1	14
Anthogyr®	Cone Morse	M3.1	15
SIN®	Conexão Externa	B1.1 B1.2 B1.3	16
SIN®	Conexão Interna	B2.1 B2.2 B2.3	16
SIN®	Cone Morse	C3.1 A3.1	17
SignoVinces® Duocon® Infra® Duocon®	Cone Morse	Q3.1 Q3.2	18
Astra Tech® EV	Cone Morse	Q3.3 Q3.4 Q3.5 Q3.6	19
Conexão®	Conexão Interna	C2.1 C2.2 C2.3	20
Frialit®	Conexão Interna	O2.2 O2.3 O2.4	21
Biomet 3i™ Certain	Conexão Externa	L1.1 L1.2 L1.3	22
Biomet 3i™ Certain	Conexão Interna	L2.1 L2.2 L2.3	22
Implacil®	Conexão Externa	D1.1	24
Implacil®	Conexão Interna	D2.1 D2.2 D2.3	24
Implacil® Due Cone® Maestro®	Cone Morse	D3.1	25
Dentoflex®	Conexão Interna	G2.1 G2.2 G2.3	26
TitaniumFix®	Conexão Externa	E1.1	28
TitaniumFix®	Conexão Interna	E2.1	28
Serson Baumer®	Conexão Interna	X2.1	29
Camlog®	Conexão Interna	P2.1 P2.2 P2.3 P2.4 P2.5	30



Link para CAD/CAM TiBase | Conexão Externa

K1.1
NP | Ø3.5



Large / Anti Rotacional
EFF 6801 . 01A . 1 cinta 0.6mm
Large / Rotacional
EFF 6801 . 01B . 1 cinta 0.6mm

Código Software: NB B 3.4



Parafuso de Retenção
Torque 20Ncm
EFF 2102 . 02A

K1.2
RP | Ø4.1



Large / Anti Rotacional
EFF 6801 . 04A . 1 cinta 0.6mm
EFF 6801 . 04A . 2 cinta 2.0mm
EFF 6801 . 04A . 3 cinta 3.0mm
EFF 6801 . 04A . 4 cinta 4.0mm
Large / Rotacional
EFF 6801 . 04B . 1 cinta 1.0mm

Código Software: NB B 4.1



Parafuso de Retenção
Torque 32Ncm
EFF 2104 . 01A
EFF 2104 . 01F

K1.3
WP | Ø5.1



Large / Anti Rotacional
EFF 6801 . 06A . 1 cinta 0.5mm
Large / Rotacional
EFF 6801 . 06B . 1 cinta 0.5mm

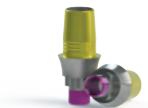
Código Software: NB B 4.1



Parafuso de Retenção
Torque 32Ncm
EFF 2105 . 08A

Link para CAD/CAM TiBase | Conexão Interna

K2.1
RP | Ø3.5



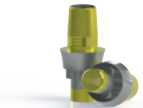
Large / Anti Rotacional
EFF 6802 . 01A . 1 cinta 1.0mm
EFF 6802 . 01A . 2 cinta 2.0mm
EFF 6802 . 01A . 3 cinta 3.0mm

Código Software: NB RS 3.5



Parafuso de Retenção
Torque 20Ncm
EFF 2103 . 03A
EFF 2103 . 03C
EFF 2103 . 03F

K2.2
RP | Ø4.3



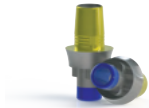
Large / Anti Rotacional
EFF 6802 . 02A . 1 cinta 1.0mm
EFF 6802 . 02A . 2 cinta 2.0mm
EFF 6802 . 02A . 3 cinta 3.0mm

Código Software: NB RS 4.3



Parafuso de Retenção
Torque 32Ncm
EFF 2104 . 02A
EFF 2104 . 02C
EFF 2104 . 02F

K2.3
WP | Ø5.0



Large / Anti Rotacional
EFF 6802 . 03A . 1 cinta 1.0mm
EFF 6802 . 03A . 2 cinta 2.0mm
EFF 6802 . 03A . 3 cinta 3.0mm

Código Software: NB RS 5.0



Parafuso de Retenção
Torque 32Ncm
EFF 2104 . 02A
EFF 2104 . 02C
EFF 2104 . 02F



Link para CAD/CAM TiBase | Cone Morse



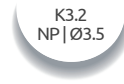
Small / Anti Rotacional

EFF 6805 . 15A . 1 . S cinta 1.5mm
EFF 6805 . 15A . 2 . S cinta 2.5mm
EFF 6805 . 15A . 3 . S cinta 3.5mm

Código Software: FX 3.4



Parafuso de Retenção
Torque 10Ncm
EFF 2101 . 06A



Large / Anti Rotacional

EFF 6805 . 06A . 4 cinta 0.5mm
EFF 6805 . 06A . 1 cinta 1.5mm
EFF 6805 . 06A . 2 cinta 2.5mm
EFF 6805 . 06A . 3 cinta 3.5mm

Large / Rotacional

EFF 6805 . 06B . 4 cinta 0.5mm

Código Software: NB B 3.4

Small / Anti Rotacional

EFF 6805 . 06A . 1S cinta 1.5mm
EFF 6805 . 06A . 2S cinta 2.5mm
EFF 6805 . 06A . 3S cinta 3.5mm

Código Software: FX 3.4

Parafuso de Retenção

Torque 20Ncm
EFF 2102 . 02A
EFF 2102 . 02C



EFF 2102 . 02F



Large | Anti Rotacional

EFF 6805 . 07A . 4 cinta 0.5mm
EFF 6805 . 07A . 1 cinta 1.5mm
EFF 6805 . 07A . 2 cinta 2.5mm
EFF 6805 . 07A . 3 cinta 3.5mm

Large / Rotacional

EFF 6805 . 07B . 4 cinta 0.5mm

Código Software: NB BA 4.5
NB BA 5.0

Parafuso de Retenção

Torque 32Ncm
EFF 2104 . 15A
EFF 2104 . 15C



EFF 2104 . 15F



Large / Anti Rotacional

EFF 6805 . 30A . 1 cinta 1.5mm

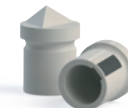
Código Software: NB B 4.1

Parafuso de Retenção

Torque 32Ncm
EFF 2104 . 15C



EFF 2104 . 15F



Scan-Body
EFF 9700 . A - Large
EFF 9700 . 1A - Small



Link para CAD/CAM TiBase | Cone Morse Bone Level

J3.5
SC | Ø2.9



Small

EFF 6805 . 28A . 1S cinta 1.0mm
EFF 6805 . 28A . 2S cinta 2.0mm
EFF 6805 . 28A . 3S cinta 3.0mm

Código Software: FX3.4

Parafuso de Retenção
Torque 10Ncm
EFF 2101 . 13D



J3.3
NC | Ø3.3



Large

EFF 6805 . 03A . 1 cinta 0.7mm
EFF 6805 . 03A . 4 cinta 1.5mm
EFF 6805 . 03A . 2 cinta 2.5mm
EFF 6805 . 03A . 3 cinta 3.5mm

Código Software: S BL 3.3

Small

EFF 6805 . 03A . 1S cinta 0.7mm
EFF 6805 . 03A . 4S cinta 1.5mm
EFF 6805 . 03A . 2S cinta 2.5mm
EFF 6805 . 03A . 3S cinta 3.5mm

Código Software: FX 3.4

Parafuso de Retenção
Torque 20Ncm
EFF 2102 . 11D



EFF 2102 . 11F

J3.4
RC | Ø4.1



Large

EFF 6805 . 04A . 1 cinta 0.7mm
EFF 6805 . 04A . 4 cinta 1.5mm
EFF 6805 . 04A . 2 cinta 2.5mm
EFF 6805 . 04A . 3 cinta 3.5mm

Código Software: S BL 4.1

Small

EFF 6805 . 04A . 1S cinta 0.7mm
EFF 6805 . 04A . 4S cinta 1.5mm
EFF 6805 . 04A . 2S cinta 2.5mm
EFF 6805 . 04A . 3S cinta 3.5mm

Código Software: FX 3.4

Parafuso de Retenção
Torque 20Ncm
EFF 2102 . 20D



EFF 2102 . 11F

Link para CAD/CAM TiBase | Cone Morse BLX

J3.6
RB | Ø3.5/3.75
/4.0/4.5



Large

Perfil Ø4.4/h4.7mm

EFF 6805 . 31 . 3A . 1 cinta 0.75mm
EFF 6805 . 31 . 3B . 1 cinta 1.5mm
EFF 6805 . 31 . 3C . 1 cinta 2.5mm
EFF 6805 . 31 . 3D . 1 cinta 3.5mm

Small

Perfil Ø3.8/h4.7mm

EFF 6805 . 31 . 3A . 1 . S cinta 0.75mm
EFF 6805 . 31 . 3B . 1 . S cinta 1.5mm

Código Software: NB4.1

Parafuso de Retenção
Torque 20Ncm
EFF 2102 . 45D



J3.7
WB | Ø3.5/3.75
/4.0/4.5/5.0
/5.5/6.0



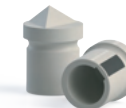
Large

Perfil Ø5.5/h4.7mm

EFF 6805 . 33 . 2A . 1 cinta 0.75mm
EFF 6805 . 33 . 2B . 1 cinta 1.5mm

Código Software: NB4.1

Parafuso de Retenção
Torque 20Ncm
EFF 2102 . 45D



Scan-Body
EFF 9700 . A - Large
EFF 9700 . 1A - Small



Link para CAD/CAM TiBase | Cone Morse Tissue Level

J3.1
RN | Ø4.8



Large
EFF 6805 . 01A . 1 cinta 1.5mm

Código Software: S SO 4.8



Parafuso de Retenção
Torque 32Ncm
EFF 2104 . 17D

J3.2
WN | Ø6.5



Large
EFF 6805 . 02A . 1 cinta 1.5mm

Código Software: S SO 6.5



Parafuso de Retenção
Torque 32Ncm
EFF 2104 . 17D

Link para CAD/CAM TiBase | Cone Morse TLX

J3.9
NT | Ø3.5



Small / Anti Rotacional
EFF 6805 . 47A . 1S cinta 0.4mm

Código Software: NB B 4.1



Parafuso de Retenção
Torque 20Ncm
EFF 2102 . 82D

J3.10
RT | Ø4.8



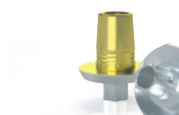
Large / Anti Rotacional
EFF 6805 . 48A . 1 cinta 0.65mm

Código Software: NB B 4.1



Parafuso de Retenção
Torque 20Ncm
EFF 2102 . 82D

J3.11
WT | Ø6.5



Large / Anti Rotacional
EFF 6805 . 49A . 1 cinta 0.85mm

Código Software: NB B 4.1



Parafuso de Retenção
Torque 20Ncm
EFF 2102 . 82D



Link para CAD/CAM TiBase | Conexão Externa

A1.1
Ø3.3



Large / Anti Rotacional
EFF 6801 . 03A . 1 cinta 0.6mm
Large / Rotacional
EFF 6801 . 03B . 1 cinta 0.6mm

Código Software: NB B 3.4

Parafuso de Retenção
Torque 20Ncm
EFF 2103 . 02A

A1.3
Ø4.3



Large / Anti Rotacional (Switching)
EFF 6801 . 04A . 1 cinta 0.6mm
EFF 6801 . 04A . 2 cinta 2.0mm
EFF 6801 . 04A . 3 cinta 3.0mm
EFF 6801 . 04A . 4 cinta 4.0mm
Large / Rotacional
EFF 6801 . 04B . 1 cinta 1.0mm

Código Software: NB B 4.1

Parafuso de Retenção
Torque 32Ncm
EFF 2104 . 01A

A1.4
Ø5.0



Large / Anti Rotacional
EFF 6801 . 08A . 1 cinta 1.8mm
Large / Rotacional
EFF 6801 . 08B . 1 cinta 1.8mm

Código Software: NB B 4.1

Parafuso de Retenção
Torque 32Ncm
EFF 2105 . 08A

Link para CAD/CAM TiBase | Conexão Interna

A2.1
Ø4.1/5.0



Large / Anti Rotacional
EFF 6804 . 09A . 1 cinta 1.0mm

Código Software: NB B 4.1

Parafuso de Retenção
Torque 20Ncm
EFF 2102 . 06A



Scan-Body
EFF 9700 . A - Large
EFF 9700 . 1A - Small

Link para CAD/CAM TiBase | Cone Morse

A3.1
CM
Ø3.5/Ø3.75
/Ø4.0/Ø4.3
/Ø5.0



Large / Anti Rotacional

EFF 6805 . 05 . 5A cinta 0.8mm
EFF 6805 . 05 . 1A cinta 1.5mm
EFF 6805 . 05 . 2A cinta 2.5mm
EFF 6805 . 05 . 3A cinta 3.5mm
EFF 6805 . 05 . 4A cinta 4.5mm

Large / Rotacional

EFF 6805 . 05 . 1B cinta 1.5mm
EFF 6805 . 05 . 2B cinta 2.5mm
EFF 6805 . 05 . 3B cinta 3.5mm
EFF 6805 . 05 . 4B cinta 4.5mm

Código Software: NB B 4.1

Parafuso de Retenção

Torque 20Ncm

EFF 2103 . 22A . 2 h 0.8/1.5/2.5mm
EFF 2103 . 22A . 3 h 3.5/4.5mm



EFF 2103 . 22F . 2 h 0.8/1.5/2.5mm
EFF 2103 . 22F . 3 h 3.5/4.5mm

Small / Anti Rotacional

EFF 6805 . 05 . 5A . S cinta 0.8mm
EFF 6805 . 05 . 1A . S cinta 1.5mm
EFF 6805 . 05 . 2A . S cinta 2.5mm
EFF 6805 . 05 . 3A . S cinta 3.5mm
EFF 6805 . 05 . 4A . S cinta 4.5mm

Código Software: FX 3.4

Parafuso de Retenção

Torque 20Ncm

EFF 2103 . 22A . 2 h 0.8/1.5/2.5mm
EFF 2103 . 22A . 3 h 3.5/4.5mm



EFF 2103 . 22F . 2 h 0.8/1.5/2.5mm
EFF 2103 . 22F . 3 h 3.5/4.5mm

A3.2
GM
Ø3.5/Ø3.75
/Ø4.0/Ø4.3
/Ø5.0



Large

EFF 6805 . 29A . 1 cinta 0.8mm
EFF 6805 . 29A . 2 cinta 1.5mm
EFF 6805 . 29A . 3 cinta 2.5mm
EFF 6805 . 29A . 4 cinta 3.5mm

Código Software: NB B 4.1

Small

EFF 6805 . 29 . 1 . S cinta 0.8mm
EFF 6805 . 29 . 2 . S cinta 1.5mm
EFF 6805 . 29 . 3 . S cinta 2.5mm
EFF 6805 . 29 . 4 . S cinta 3.5mm

Código Software: FX3.4

Parafuso de Retenção

Torque 20Ncm

EFF 2102 . 34E



Link para CAD/CAM TiBase | Cone Morse

T3.1
NP C1 | Ø3.3



Small / Anti Rotacional

EFF 6805 . 40A . 1S cinta 0.5mm
EFF 6805 . 40B . 2S cinta 1.5mm
EFF 6805 . 40C . 3S cinta 3.0mm

Small / Rotacional

EFF 6805 . 40B . 1S cinta 0.5mm

Código Software: FX3.4

1.30

Parafuso de Retenção

Torque 20Ncm
EFF 2102 . 55A

EFF 2102 . 55F



T3.2
NP V3 | Ø3.3



Small / Anti Rotacional

EFF 6805 . 41A . 1S cinta 0.5mm
EFF 6805 . 41B . 2S cinta 1.5mm
EFF 6805 . 41C . 3S cinta 3.0mm

Small / Rotacional

EFF 6805 . 41B . 1S cinta 0.5mm

Código Software: FX3.4

1.30

Parafuso de Retenção

Torque 20Ncm
EFF 2102 . 55A

EFF 2102 . 55F



T3.3
SP C1/V3
Ø3.75/3.9
/4.2/4.3



Large / Anti Rotacional

EFF 6805 . 42A . 1 cinta 0.5mm
EFF 6805 . 42A . 2 cinta 1.5mm
EFF 6805 . 42A . 3 cinta 3.0mm

Large / Rotacional

EFF 6805 . 42B . 1 cinta 0.5mm

Código Software: NB B4.1

Small / Anti Rotacional

EFF 6805 . 42A . 1S cinta 0.5mm
EFF 6805 . 42A . 2S cinta 1.5mm
EFF 6805 . 42A . 3S cinta 3.0mm

Large / Rotacional

EFF 6805 . 42B . 1S cinta 0.5mm

Código Software: FX3.4

1.30

Parafuso de Retenção

Torque 20Ncm
EFF 2103 . 14A

EFF 2103 . 14F



Scan-Body
EFF 9700 . A - Large
EFF 9700 . 1A - Small

Fluxo intraoral CEREC®



CONE MORSE ● CONEXÃO INTERNA ● CONEXÃO EXTERNA

1.

IMPLANTES CONEXÃO CONE MORSE EXTERNA E INTERNA

Selecione o link conforme a plataforma do implante e a altura do transmucoso.



2.

POSICIONE O LINK

TiBase para Zircônia e Dissilicato de Lítio.
Verifique a adaptação.



3.

COLOQUE O SCAN BODY SOBRE O LINK

Alinhe a marcação preta do Scan Body com a retenção do link.



*Obs: As cores dos links alteram de acordo com diâmetro do implante.

4.

REALIZE O ESCANEAMENTO

Moldagem intraoral das arcadas dentárias pelo scanner intraoral digital.



5.

DESENHO (CAD)

Definição do modelo final virtual a partir das informações capturadas e projeto da prótese através de software CAD.



6.

FRESAGEM (CAM)

Produção da prótese por meio de uma fresadora CAM. Selecione o bloco indicado (pilar ou coroa) no sistema CAD, posicione o elemento e inicie a fresagem.



7.

ACABAMENTO E CONTROLE DE QUALIDADE

Verificação de todos os itens fresados. Analisar adaptação, cor e padrão estético de todos os componentes.



8.

INSTALAÇÃO O E TORQUE

Parafuse o componente sobre o implante, usando os torques recomendados:
Ø3.0 - 10Ncm
NP | Ø3.3/Ø3.5 - 20Ncm
RP | Ø4.3/Ø5.0 - 32Ncm



9.

CIMENTAÇÃO

Cimentação da prótese fresada sobre o link, usando cimento, conforme instruções do fabricante.



Sistema Cerec®

Link para CAD/CAM TiBase | Cone Morse



Small / Anti Rotacional

EFF 6805 . 37A . 1S cinta 1.0mm
 EFF 6805 . 37A . 2S cinta 2.0mm
 EFF 6805 . 37A . 3S cinta 3.0mm
 EFF 6805 . 37A . 4S cinta 4.0mm
 EFF 6805 . 37A . 5S cinta 5.0mm
 EFF 6805 . 37A . 6S cinta 6.0mm

Código Software: FX3.4



Parafuso de Retenção Torque 10Ncm

EFF 2101 . 65A . 1
 cintas 1.0/2.0/3.0mm
 EFF 2101 . 65A . 2
 cintas 4.0/5.0/6.0mm



Large / Anti Rotacional

EFF 6805 . 38A . 1 cinta 1.0mm
 EFF 6805 . 38A . 2 cinta 2.0mm
 EFF 6805 . 38A . 3 cinta 3.0mm
 EFF 6805 . 38A . 4 cinta 4.0mm
 EFF 6805 . 38A . 5 cinta 5.0mm
 EFF 6805 . 38A . 6 cinta 6.0mm

Código Software: NB B 4.1



Parafuso de Retenção Torque 10Ncm

EFF 2101 . 66A . 1
 cintas 1.0/2.0/3.0mm
 EFF 2101 . 66A . 2
 cintas 4.0/5.0/6.0mm



Scan-Body
 EFF 9700 . A - Large
 EFF 9700 . 1A - Small

Fluxo Análogo Link

Ajustes prévios à prova em boca para casos excepcionais.

1. SELECIONE OS COMPONENTES



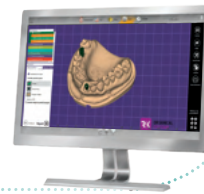
2. ESCANEIE USANDO O SCAN BODY ADEQUADO



3. USE O COPING PLÁSTICO PARA LINK PARA CONDECCIONAR O PROVISÓRIO



4. EXPORTE O STL PARA O EXOCAD OU MESHMIXER, DESENHE E IMPRIMA O MODELO



5. USE O ANÁLOGOLINK (PEÇA ÚNICA, MAIS ECONÔMICA E PECISA)



6. EXECUTE O TRABALHO CONFORME DESEJAR



Link para CAD/CAM TiBase | Cone Morse

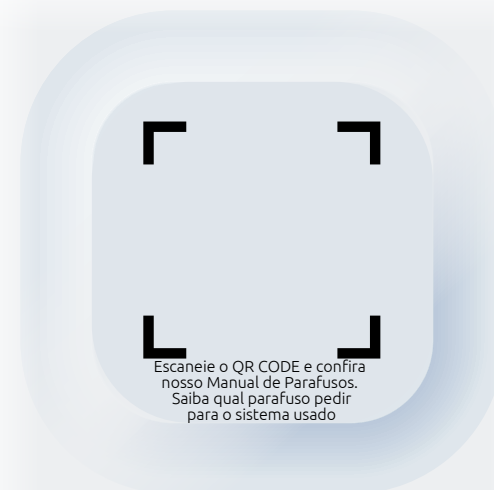


Large

EFF 6805 . 44A . 1 cinta 1.0mm
EFF 6805 . 44A . 2 cinta 2.0mm
EFF 6805 . 44A . 3 cinta 3.0mm

Código Software: NB B 4.1

 Parafuso de Retenção
Torque 20Ncm
EFF 2102 . 78A



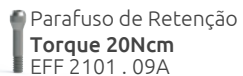
Escaneie o QR CODE e confira
nosso Manual de Parafusos.
Saiba qual parafuso pedir
para o sistema usado

Link para CAD/CAM TiBase | Cone Morse



Large
EFF 6805 . 16A . 1 cinta 0.8mm

Código Software: NB B 4.1



Scan-Body
EFF 9700 . A - Large
EFF 9700 . 1A - Small

Link para CAD/CAM TiBase | Conexão Externa

B1.1
Ø3.4



Large
EFF 6801 . 02A . 1 cinta 0.6mm

Código Software: BO 3.4

Parafuso de Retenção
Torque 32Ncm
EFF 2104 . 01A

B1.2
Ø4.1



Large / Anti Rotacional
EFF 6801 . 04A . 1 cinta 0.6mm
EFF 6801 . 04A . 2 cinta 2.0mm
EFF 6801 . 04A . 3 cinta 3.0mm
EFF 6801 . 04A . 4 cinta 4.0mm

Large / Rotacional
EFF 6801 . 04B . 1 cinta 1.0mm

Código Software: NB B 4.1

Parafuso de Retenção
Torque 32Ncm
EFF 2104 . 01A

B1.3
Ø5.0
(Switching)



Large / Anti Rotacional
EFF 6801 . 04A . 1 cinta 0.6mm
EFF 6801 . 04A . 2 cinta 2.0mm
EFF 6801 . 04A . 3 cinta 3.0mm
EFF 6801 . 04A . 4 cinta 4.0mm

Large / Rotacional
EFF 6801 . 04B . 1 cinta 1.0mm

Código Software: NB B 4.1

Parafuso de Retenção
Torque 32Ncm
EFF 2104 . 01A

Link para CAD/CAM TiBase | Conexão Interna

B2.1
Ø3.8



Large
EFF 6804 . 05A . 1 cinta 1.0mm
EFF 6804 . 05A . 2 cinta 2.0mm
EFF 6804 . 05A . 3 cinta 3.0mm

Código Software: NB B 4.1

Parafuso de Retenção
Torque 20Ncm
Rosca Ø1.6
EFF 2102 . 14A
Rosca Ø1.8
EFF 2103 . 15A

B2.2
Ø4.5



Large
EFF 6804 . 06A . 1 cinta 1.0mm
EFF 6804 . 06A . 2 cinta 2.0mm
EFF 6804 . 06A . 3 cinta 3.0mm

Código Software: NB B 4.1

Parafuso de Retenção
Torque 20Ncm
Rosca Ø1.6
EFF 2102 . 14A
Rosca Ø1.8
EFF 2103 . 15A

B2.3
Ø5.5
(Switching)



Large
EFF 6804 . 06A . 1 cinta 1.0mm
EFF 6804 . 06A . 2 cinta 2.0mm
EFF 6804 . 06A . 3 cinta 3.0mm

Código Software: NB B 4.1

Parafuso de Retenção
Torque 20Ncm
Rosca Ø1.6
EFF 2102 . 14A
Rosca Ø1.8
EFF 2103 . 15A

Link para CAD/CAM TiBase | Cone Morse

C3.1
Strong®
Ø3.5/Ø3.8/
Ø4.5/Ø5.5



Large

EFF 6805 . 10A . 1 cinta 1.5mm

Código Software: NB B 4.1

 Parafuso de Retenção
Torque 20Ncm
EFF 2102 . 24A

A3.1
Unitite® SWC
Ø3.5/Ø3.75/
Ø4.0/Ø4.3/Ø5.0



Large

EFF 6805 . 05 . 5A cinta 0.8mm
EFF 6805 . 05 . 1A cinta 1.5mm
EFF 6805 . 05 . 2A cinta 2.5mm
EFF 6805 . 05 . 3A cinta 3.5mm
EFF 6805 . 05 . 4A cinta 4.5mm
Código Software: NB B 4.1

Parafuso de Retenção

Torque 20Ncm

EFF 2103 . 22A . 2 h 1.5/2.5mm
EFF 2103 . 22A . 3 h 3.5/4.5mm


Small

EFF 6805 . 05 . 5A . S cinta 0.8mm
EFF 6805 . 05 . 1A . S cinta 1.5mm
EFF 6805 . 05 . 2A . S cinta 2.5mm
EFF 6805 . 05 . 3A . S cinta 3.5mm
EFF 6805 . 05 . 4A . S cinta 4.5mm

Código Software: FX 3.4

Parafuso de Retenção

Torque 20Ncm

 EFF 2103 . 22A . 2 h 0.8/1.5/2.5mm
EFF 2103 . 22A . 3 h 3.5/4.5mm



Scan-Body
EFF 9700 . A - Large
EFF 9700 . 1A - Small

Link para CAD/CAM TiBase | Cone Morse

Q3.1
Ø4.0



Large
EFF 6805 . 12A . 1 cinta 1.5mm

Código Software: NB B 4.1


 Parafuso de Retenção
Torque 20Ncm
EFF 2102 . 06A

Q3.2
Ø4.5/5.0



Large
EFF 6805 . 13A . 1 cinta 1.5mm

Código Software: NB B 4.1

 Parafuso de Retenção
Torque 32Ncm
EFF 2104 . 02A




Link para CAD/CAM TiBase | Cone Morse

Q3.3
Ø4.5/5.0



Large
EFF 6805 . 21A . 1 cinta 0.8mm

Código Software: NB B 4.1


 Parafuso de Retenção
Torque 20Ncm
EFF 2102 . 29A

Q3.4
Ø4.2



Large
EFF 6805 . 22A . 1 cinta 0.8mm

Código Software: NB B 4.1


 Parafuso de Retenção
Torque 20Ncm
EFF 2103 . 27A

Q3.5
Ø4.8



Large
EFF 6805 . 23A . 1 cinta 0.6mm

Código Software: NB B 4.1

 Parafuso de Retenção
Torque 32Ncm
EFF 2104 . 21A

Q3.6
Ø5.4



Large
EFF 6805 . 24A . 1 cinta 0.7mm

Código Software: NB B 4.1

 Parafuso de Retenção
Torque 32Ncm
EFF 2104 . 21A



Scan-Body
EFF 9700 . A - Large
EFF 9700 . 1A - Small



Link para CAD/CAM TiBase | Conexão Interna

C2.1/C2.2/C2.3
Ø4.1/Ø4.3/
/Ø5.0/Ø6.0



Large

EFF 6804 . 11A . 1 cinta 1.0mm
EFF 6804 . 11A . 2 cinta 2.0mm
EFF 6804 . 11A . 3 cinta 3.0mm

Código Software: NB B 4.1



Parafuso de Retenção
Torque 20Ncm
EFF 2103 . 18A



Quer fazer um pedido?
Entre em contato com nossos
Técnicos em Vendas, agora.

Link para CAD/CAM TiBase | Conexão Interna

02.2
Ø3.8



Large

EFF 6804 . 05A . 1 cinta 1.0mm
EFF 6804 . 05A . 2 cinta 2.0mm
EFF 6804 . 05A . 3 cinta 3.0mm

Código Software: NB B 4.1

Parafuso de Retenção

Torque 20Ncm

Rosca Ø1.6

EFF 2102 . 14A



02.3
Ø4.5



Large

EFF 6804 . 06A . 1 cinta 1.0mm
EFF 6804 . 06A . 2 cinta 2.0mm
EFF 6804 . 06A . 3 cinta 3.0mm

Código Software: NB B 4.1

Parafuso de Retenção

Torque 20Ncm

Rosca Ø1.6

EFF 2102 . 14A



02.4
Ø5.5
(Switching)



Large

EFF 6804 . 06A . 1 cinta 1.0mm
EFF 6804 . 06A . 2 cinta 2.0mm
EFF 6804 . 06A . 3 cinta 3.0mm

Código Software: NB B 4.1

Parafuso de Retenção

Torque 20Ncm

Rosca Ø1.6

EFF 2102 . 14A



Scan-Body

EFF 9700 . A - Large

EFF 9700 . 1A - Small



Link para CAD/CAM TiBase | Conexão Externa



Large / Anti Rotacional
EFF 6801 . 02A . 1 cinta 0.5mm

Código Software: BC 4.1



Parafuso de Retenção
Torque 32Ncm
EFF 2104 . 01A



Large / Anti Rotacional
EFF 6801 . 04A . 1 cinta 0.6mm
EFF 6801 . 04A . 2 cinta 2.0mm
EFF 6801 . 04A . 3 cinta 3.0mm
EFF 6801 . 04A . 4 cinta 4.0mm

Código Software: BC 4.1



Parafuso de Retenção
Torque 32Ncm
EFF 2104 . 01A



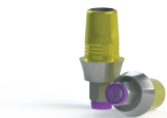
Large / Anti Rotacional
EFF 6801 . 04A . 1 cinta 0.6mm
EFF 6801 . 04A . 2 cinta 2.0mm
EFF 6801 . 04A . 3 cinta 3.0mm
EFF 6801 . 04A . 4 cinta 4.0mm

Código Software: BC 4.1



Parafuso de Retenção
Torque 32Ncm
EFF 2104 . 01A

Link para CAD/CAM TiBase | Conexão Interna

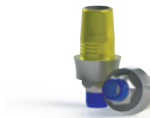


Large / Anti Rotacional
EFF 6804 . 01A . 1 cinta 1.0mm
EFF 6804 . 01A . 2 cinta 2.0mm
EFF 6804 . 01A . 3 cinta 3.0mm

Código Software: BC 4.1



Parafuso de Retenção
Torque 20Ncm
EFF 2102 . 06A

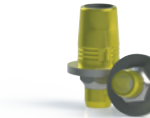
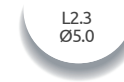


Large / Anti Rotacional
EFF 6804 . 02A . 1 cinta 1.0mm
EFF 6804 . 02A . 2 cinta 2.0mm
EFF 6804 . 02A . 3 cinta 3.0mm

Código Software: BC 4.1



Parafuso de Retenção
Torque 20Ncm
EFF 2102 . 06A



Large / Anti Rotacional
EFF 6804 . 03A . 1 cinta 1.0mm
EFF 6804 . 03A . 2 cinta 2.0mm
EFF 6804 . 03A . 3 cinta 3.0mm

Código Software: BC 4.1



Parafuso de Retenção
Torque 20Ncm
EFF 2102 . 06A

Sistema de Implante	Plataforma do Implante	Plataforma Protética	Código EFF	Código Sirona	Especificação	
Nobel Biocare®	K3.1	Ø3.0	Ø3.0	EFF 6805 . 15A . 15*	FX 3.4	Small
	K3.2	Ø3.5	Ø3.5	EFF 6805 . 06A . 1*	NB B 3.4	Large
	K3.3	Ø4.3/5.0	Ø3.9	EFF 6805 . 06A . 15*	FX 3.4	Small
				EFF 6805 . 07A . 1	NB B 3.4	Large
					NB BA 5.0	Large
K3.5	Ø5.5	Ø5.5	EFF 6805 . 30A . 1	NB B 4.1	Large	
Straumann®	J3.1	Ø3.3/4.1/4.8	Ø4.8	EFF 6805 . 01A . 1	S SO 4.8	Large
	J3.2	Ø4.8	Ø6.5	EFF 6805 . 02A . 1	S SO 6.5	Large
	J3.3	Ø3.3	Ø3.3	EFF 6805 . 03A . 1*	S BL 3.3	Large
				EFF 6805 . 03A . 15*	FX 3.4	Small
				EFF 6805 . 04A . 1*	S BL 4.1	Large
	J3.4	Ø4.1/4.8	Ø4.1	EFF 6805 . 04A . 15*	FX 3.4	Small
	J3.5	Ø2.9	Ø2.9	EFF 6805 . 28A . 15*	FX 3.4	Small
	J3.6	Ø3.5	Ø3.5/3.75/4.0/4.5	EFF 6805 . 31 . 3A . 1*	NB 4.1	Large
	J3.7	Ø4.5	Ø3.5/3.75/4.0/4.5/5.0/5.5/6.5	EFF 6805 . 33 . 2A . 1*	NB 4.1	Large
	J3.9	Ø3.75/4.5	Ø3.5	EFF 6805 . 47A . 15	NB B 4.1	Small
	J3.10	Ø3.75/4.5	Ø4.8	EFF 6805 . 48A . 1	NB B 4.1	Large
J3.11	Ø3.75/4.5	Ø6.5	EFF 6805 . 49A . 1	NB B 4.1	Large	
SIN®	C3.1	Ø3.5/3.8/4.5/5.5	Ø3.5/3.8/4.5/5.5	EFF 6805 . 10A . 1	NB B 4.1	Large
Neodent®	A3.1	Ø3.5/3.75/4.0/4.3/5.0	Ø3.5/3.75/4.0/4.3	EFF 6805 . 05 . 1A*	NB B 4.1	Large
				EFF 6805 . 05 . 1A . 5*	FX 3.4	Small
	A3.2	Ø3.5/3.75/4.0/4.3/5.0	Ø3.0	EFF 6805 . 29A . 1*	NB B 4.1	Large
MIS®	T3.1	Ø3.3	Ø3.3	EFF 6805 . 40A . 15*	FX 3.4	Small
	T3.2	Ø3.3	Ø3.3	EFF 6805 . 41A . 15*	FX 3.4	Small
	T3.3	Ø3.75/3.9/4.2/4.3	Ø3.75/3.9/4.2/4.3	EFF 6805 . 42A . 1*	NB B 4.1	Large
Plenum®	Y3.1	Ø3.0	Ø3.0	EFF 6805 . 37A . 15*	FX 3.4	Small
	Y3.2	Ø3.5	Ø3.5	EFF 6805 . 38A . 1*	NB B 4.1	Large
Bionnovation®	U3.1	Ø3.5/5.0	Ø3.5	EFF 6805 . 44A . 1*	NB B 4.1	Large
SignoVinces®	Q3.1	Ø3.3/3.8/4.6	Ø4.0	EFF 6805 . 12A . 1	NB B 4.1	Large
	Q3.2	Ø3.8/4.5/5.5	Ø4.5	EFF 6805 . 13A . 1	NB B 4.1	Large
Astra Tech®	Q3.3	Ø3.6	Ø3.6	EFF 6805 . 21A . 1	NB B 4.1	Large
	Q3.4	Ø4.2	Ø4.2	EFF 6805 . 22A . 1	NB B 4.1	Large
	Q3.5	Ø4.8	Ø4.8	EFF 6805 . 23A . 1	NB B 4.1	Large
	Q3.6	Ø5.4	Ø5.4	EFF 6805 . 24A . 1	NB B 4.1	Large
Implacil®	D3.1	Ø3.5/3.75/4.0/4.3/5.0	Ø4.8	EFF 6805 . 25A . 1*	NB B 4.1	Large
Anthogyr®	M3.1	Ø3.4/4.0/4.6/5.4	AXIOM	EFF 6805 . 16A . 1	NB B 4.1	Large



*Verificar em suas respectivas páginas a variação de cinta e altura equivalentes.

* Os produtos indicados com ® são nomes de marcas registradas dos seus respectivos fabricantes.



Link para CAD/CAM TiBase | Conexão Externa

D1.1
Ø3.3



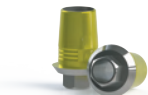
Large / Anti Rotacional
EFF 6801 . 01A . 1 cinta 0.6mm
Large / Rotacional
EFF 6801 . 01B . 1 cinta 0.6mm

Código Software: NB B 3.4

Parafuso de Retenção
Torque 20Ncm
EFF 2103 . 02A

Link para CAD/CAM TiBase | Conexão Interna

D2.1
Ø3.5

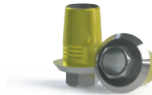


Large / Anti Rotacional
EFF 6803 . 01A . 1 cinta 1.0mm
EFF 6803 . 01A . 2 cinta 2.0mm
EFF 6803 . 01A . 3 cinta 3.0mm

Código Software: NB B 4.1

Parafuso de Retenção
Torque 20Ncm
EFF 2103 . 02A

D2.2
Ø4.0



Large / Anti Rotacional
EFF 6803 . 02A . 1 cinta 1.0mm
EFF 6803 . 02A . 2 cinta 2.0mm
EFF 6803 . 02A . 3 cinta 3.0mm

Código Software: NB B 4.1

Parafuso de Retenção
Torque 32Ncm
EFF 2104 . 01A

D2.3
Ø5.0



Large / Anti Rotacional
EFF 6803 . 03A . 1 cinta 1.0mm
EFF 6803 . 03A . 2 cinta 2.0mm
EFF 6803 . 03A . 3 cinta 3.0mm

Código Software: NB B 4.1

Parafuso de Retenção
Torque 32Ncm
EFF 2104 . 01A

Link para CAD/CAM TiBase | Cone Morse



Large

EFF 6805 . 25A . 1 cinta 0.8mm
EFF 6805 . 25A . 2 cinta 1.5mm
EFF 6805 . 25A . 3 cinta 2.5mm

Código Software: NB B 4.1



Parafuso de Retenção

Torque 20Ncm

EFF 2103 . 22A . 2 h 0.8/1.5/2.5mm
EFF 2103 . 22A . 3 h 3.5/4.5mm



Scan-Body
EFF 9700 . A - Large
EFF 9700 . 1A - Small



Link para CAD/CAM TiBase | Conexão Interna



Large / Anti Rotacional

EFF 6803 . 08A . 1 cinta 1.0mm
EFF 6803 . 08A . 2 cinta 2.0mm
EFF 6803 . 08A . 3 cinta 3.0mm

Código Software: NB B 4.1



Parafuso de Retenção
Torque 32Ncm
EFF 2104 . 01A



Large / Anti Rotacional

EFF 6803 . 09A . 1 cinta 1.0mm
EFF 6803 . 09A . 2 cinta 2.0mm
EFF 6803 . 09A . 3 cinta 3.0mm

Código Software: NB B 4.1



Parafuso de Retenção
Torque 32Ncm
EFF 2104 . 01A



Large / Anti Rotacional

EFF 6803 . 10A . 1 cinta 1.0mm

Código Software: NB B 4.1



Parafuso de Retenção
Torque 32Ncm
EFF 2104 . 01A



Scan-Body
EFF 9700 . A - Large
EFF 9700 . 1A - Small

Lista de Código do Software Sirona Conexão Externa



Sistema de Implante	Plataforma do Implante	Plataforma Protética	Código EFF	Código Sirona	Especificação
Nobel Biocare®	K1.1 Ø3.3	Ø3.5	EFF 6801 . 01A . 1*	NB B 3.4	Large
	K1.2 Ø3.25 mini/3.5/3.75/3.8/4.0/4.1	Ø3.5	EFF 6801 . 04A . 1*	NB B 4.1	Large
	K1.3 Ø5.0/6.0	Ø5.1	EFF 6801 . 06A . 1*	NB B 4.1	Large
Neodent®	A1.1 Ø3.3/3.5	Ø3.3	EFF 6801 . 03A . 1*	NB B 3.4	Large
	A1.3 Ø4.3	Ø4.3	EFF 6801 . 04A . 1*	NB B 4.1	Large
	A1.4 Ø4.5/5.0	Ø5.0	EFF 6801 . 08 . 1*	NB B 4.1	Large
SIN®	B1.1 Ø3.25/4.5	Ø3.4	EFF 6801 . 02A . 1	BO 3.4	Large
	B1.2 Ø4.1	Ø4.1	EFF 6801 . 04A . 1*	NB B 4.1	Large
	B1.3 Ø5.0	Ø5.0	EFF 6801 . 04A . 1*	NB B 4.1	Large
Biomet®3i™	L1.1 Ø3.25 micromini/4.5	Ø3.4	EFF 6801 . 02A . 1	BC 4.1	Large
	L1.2 Ø4.0	Ø4.1	EFF 6801 . 04A . 1*	NB B 4.1	Large
	L1.3 Ø4.75/5.0	Ø5.0	EFF 6801 . 04A . 1*	NB B 4.1	Large
Implacil®	D1.1 Ø3.3	Ø3.3	EFF 6801 . 01A . 1*	NB B 3.4	Large
TitaniumFix®	E1.1 Ø3.3	Ø3.3	EFF 6801 . 01A . 1*	NB B 3.4	Large

Lista de Código do Software Sirona Conexão Interna

Sistema de Implante	Plataforma do Implante	Plataforma Protética	Código EFF	Código Sirona	Especificação
Nobel Biocare®	K2.1 Ø3.5	Ø3.5	EFF 6802 . 01A . 1*	NB RS 3.5	Large
	K2.2 Ø4.3	Ø4.3	EFF 6802 . 02A . 1*	NB RS 4.3	Large
	K2.3 Ø5.0	Ø5.0	EFF 6802 . 03A . 1*	NB RS 5.0	Large
Neodent®	A2.1 Ø3.75/4.3/5.0	Ø4.3/5.0	EFF 6804 . 09A . 1	NB B 4.1	Large
	B2.1 Ø3.8	Ø3.8	EFF 6804 . 05A . 1*	NB B 4.1	Large
SIN®	B2.2 Ø4.0/4.3	Ø4.5	EFF 6804 . 06A . 1*	NB B 4.1	Large
	B2.3 Ø4.0/5.0	Ø5.5	EFF 6804 . 07A . 1*	NB B 4.1	Large
Conexao®	C2.1 Ø3.75/4.0/4.3/5.0	Ø4.1/4.3/5.0/6.0	EFF 6804 . 11A . 1*	NB B 4.1	Large
	O2.2 Ø3.8	Ø3.8	EFF 6804 . 05A . 1*	NB B 4.1	Large
Frialit®	O2.3 Ø4.0/4.3	Ø4.5	EFF 6804 . 06A . 1*	NB B 4.1	Large
	O2.4 Ø4.0/5.0	Ø5.5	EFF 6804 . 06A . 1*	NB B 4.1	Large
	L2.1 Ø3.25	Ø3.4	EFF 6804 . 01A . 1*	BC 4.1	Large
Biomet®3i™	L2.2 Ø4.0	Ø4.1	EFF 6804 . 02A . 1*	BC 4.1	Large
	L2.3 Ø5.0	Ø5.0	EFF 6804 . 03A . 1*	BC 4.1	Large
	D2.1 Ø3.3/3.5	Ø3.5	EFF 6803 . 01A . 1*	NB B 4.1	Large
Implacil®	D2.2 Ø3.75/4.3	Ø4.0	EFF 6803 . 02A . 1*	NB B 4.1	Large
	D2.3 Ø4.75/5.0	Ø5.0	EFF 6803 . 03A . 1*	NB B 4.1	Large
	G2.1 Ø3.25	Ø3.25	EFF 6803 . 08A . 1*	NB B 4.1	Large
Dentoflex®	G2.2 Ø3.5	Ø3.5	EFF 6803 . 09A . 1*	NB B 4.1	Large
	G2.3 Ø3.75	Ø3.75	EFF 6803 . 10A . 1	NB B 4.1	Large
	TitaniumFix®	E2.1 Ø4.1/5.1	Ø3.75/5.0	EFF 6803 . 04A . 1	NB B 4.1
Serson Baumer®	X2.1 Ø4.1/5.1	Ø3.5/5.0	EFF 6803 . 34A . 1	NB B 4.1	Large
Camlog®	P2.1 Ø3.3	Ø3.3	EFF 6802 . 05A . 1*	NB RS 4.3	Large
	P2.2 Ø3.8	Ø3.8	EFF 6802 . 06A . 1*	NB RS 4.3	Large
	P2.3 Ø4.3	Ø4.3	EFF 6802 . 07A . 1*	NB RS 4.3	Large
	P2.4 Ø5.0	Ø5.0	EFF 6802 . 08A . 1*	NB RS 4.3	Large
	P2.5 Ø6.0	Ø6.0	EFF 6802 . 09A . 1*	NB RS 4.3	Large

*Verificar em suas respectivas páginas a variação de cinta e altura equivalentes.

* Os produtos indicados com ® são nomes de marcas registadas dos seus respectivos fabricantes.

Link para CAD/CAM TiBase | Conexão Externa

E1.1
Ø3.3



Large / Anti Rotacional

EFF 6801 . 01A . 1 cinta 0.6mm

Large / Rotacional

EFF 6801 . 01B . 1 cinta 0.6mm

Código Software: NB B 3.4



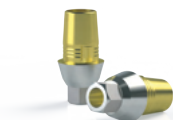
Parafuso de Retenção

Torque 20Ncm

EFF 2106 . 01A

Link para CAD/CAM TiBase | Conexão Interna

E2.1
Ø3.75/5.0



Large / Anti Rotacional

EFF 6803 . 04A . 1 cinta de 1.0mm

Código Software: NB B 4.1

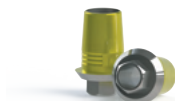


Parafuso de Retenção

Torque 20Ncm

EFF 2103 . 25A

Link para CAD/CAM TiBase | Conexão Interna



Large / Anti Rotacional
EFF 6803 . 34A . 1 cinta 1.0mm

Código Software: NB B 4.1



Parafuso de Retenção
Torque 32Ncm
EFF 2104 . 01A



Scan-Body
EFF 9700 . A - Large
EFF 9700 . 1A - Small

Link para CAD/CAM TiBase | Conexão Interna

P2.1
Ø3.3



Large / Anti Rotacional
EFF 6802 . 05A . 1 cinta 0.3mm
EFF 6802 . 05A . 2 cinta 1.5mm
EFF 6802 . 05A . 3 cinta 2.5mm

Código Software: NB RS 4.3

Parafuso de Retenção
Torque 20Ncm
EFF 2102 . 04A

P2.2
Ø3.8



Large / Anti Rotacional
EFF 6802 . 06A . 1 cinta 0.3mm
EFF 6802 . 06A . 2 cinta 1.5mm
EFF 6802 . 06A . 3 cinta 2.5mm

Código Software: NB RS 4.3

Parafuso de Retenção
Torque 32Ncm
EFF 2104 . 06A

P2.3
Ø4.3



Large / Anti Rotacional
EFF 6802 . 07A . 1 cinta 0.3mm
EFF 6802 . 07A . 2 cinta 1.5mm
EFF 6802 . 07A . 3 cinta 2.5mm

Código Software: NB RS 4.3

Parafuso de Retenção
Torque 32Ncm
EFF 2104 . 06A

P2.4
Ø5.0

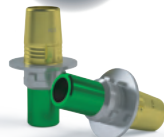


Large / Anti Rotacional
EFF 6802 . 08A . 1 cinta 0.3mm
EFF 6802 . 08A . 2 cinta 1.5mm
EFF 6802 . 08A . 3 cinta 2.5mm

Código Software: NB RS 4.3

Parafuso de Retenção
Torque 32Ncm
EFF 2104 . 06A

P2.5
Ø6.0



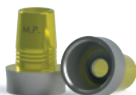
Large / Anti Rotacional
EFF 6802 . 09A . 1 cinta 1.0mm
EFF 6802 . 09A . 2 cinta 1.5mm
EFF 6802 . 09A . 3 cinta 2.5mm

Código Software: NB RS 4.3

Parafuso de Retenção
Torque 32Ncm
EFF 2104 . 06A


Link para CAD/CAM TiBase | Mini Pilar Regular

M.P.
Ø3.5



Large / Anti Rotacional
EFF 6811 . 01 . 1 cinta 1.9mm

Código Software: NB B 4.1

 Parafuso de Retenção
Torque 10Ncm
EFF 2101 . 01A



Link para CAD/CAM TiBase | EsthetiOne

EONE
Ø3.8



Large / Anti Rotacional
EFF 6818 . 01A . 1 cinta 1.2mm

Código Software: NB B 4.1

 Parafuso de Retenção
Torque 10Ncm
EFF 2104 . 38A
 EFF 2104 . 38F



Scan-Body
EFF 9700 . A - Large
EFF 9700 . 1A - Small



effdental.com.br

☎ 11 3059.2200 | @ atendimento@effdental.com.br

Nos encontre no Facebook
@effdental



Siga a EFF no Instagram
@effdental



Nos siga no YouTube
EFF Dental Componentes



Nos encontre no LinkedIn
EFF Dental Componentes

